

## Steel trunking Series 130 and Series 170

### Material

Steel trunking is manufactured from pre-galvanised steel with a powder coat finish to RAL 9010.

### Positioning

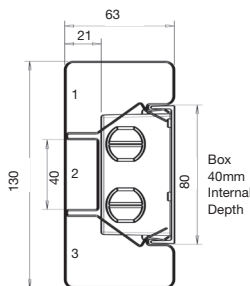
- System 130: suitable for dado installation.
- System 170: suitable for dado and skirting installation.

If used for skirting applications, a clearance of 10mm is recommended above the floor covering to maintain IP4X rating.

### Screening

Steel containment protects internal circuits from external electromagnetic interference. For internal segregation and screening, use the steel dividing fillet 351189.

### Dimensions

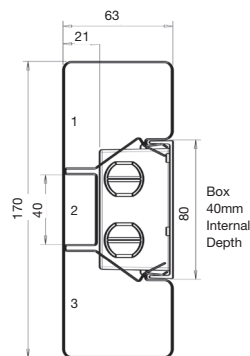


#### System 130 trunking 130 x 63mm

Compartments 1 & 3 = 1585mm<sup>2</sup> (each) total area  
 Compartments 1 & 3 = 713mm<sup>2</sup> (each) 45% space factor  
 Compartment 2 = 760mm<sup>2</sup> total area (with box)  
 Compartment 2 = 342mm<sup>2</sup> 45% space factor (with box)

#### Internal dimensions

Compartment 1 = 128 x 61mm



#### System 170 trunking 170 x 63mm

Compartments 1 & 3 = 2812mm<sup>2</sup> (each) total area  
 Compartments 1 & 3 = 1265mm<sup>2</sup> (each) 45% space factor  
 Compartment 2 = 760mm<sup>2</sup> total area (with box)  
 Compartment 2 = 342mm<sup>2</sup> 45% space factor (with box)

#### Internal dimensions

Compartment 1 = 168 x 61mm



### Cable capacities

- All calculations allow for a 45% space factor.

As there can be differences between data cable sizes, Marshall-Tufflex recommend that cable dimensions are confirmed with the manufacturing company.

Cable capacity chart	Compartment 1		Compartment 2		Compartment 3	
	No box	With box	No box	With box	No box	With box
<b>PVC power cable 1.5mm<sup>2</sup> stranded copper</b>						
System 130	82	-	-	37	82	-
System 170	147	-	-	39	147	-
<b>PVC power cable 2.5mm<sup>2</sup> stranded copper</b>						
System 130	56	-	-	25	56	-
System 170	100	-	-	27	100	-
<b>PVC power cable 4.0mm<sup>2</sup> stranded copper</b>						
System 130	42	-	-	19	42	-
System 170	76	-	-	20	76	-
<b>Data cable: Ø5.5mm</b>						
System 130	30	-	-	13	30	-
System 170	53	-	-	14	53	-
<b>Data cable: Ø6.0mm</b>						
System 130	25	-	-	11	25	-
System 170	44	-	-	12	44	-
<b>Data cable: Ø6.5mm</b>						
System 130	21	-	-	9	21	-
System 170	38	-	-	10	38	-
<b>Data cable: Ø7.0mm</b>						
System 130	18	-	-	8	18	-
System 170	32	-	-	8	32	-
<b>Data cable: Ø8.4mm</b>						
System 130	12	-	-	5	12	-
System 170	22	-	-	6	22	-

To determine cable capacity, select the size of the cable required and its corresponding cable factor from the table. Divide the compartment area figure (with or without 45% space factor) with the cable factor figure to achieve cable capacity.

Conductor type	Size	Cable factor
Stranded PVC power	1.5mm <sup>2</sup>	8.6
Stranded PVC power	2.5mm <sup>2</sup>	12.6
Stranded PVC power	4.0mm <sup>2</sup>	16.6
*Data cable	Ø5.5mm	23.8
*Data cable	Ø6.0mm	28.3
*Data cable	Ø6.5mm	33.2
*Data cable	Ø7.0mm	38.5
*Data cable	Ø8.4mm	55.4

For Data cable information, please see page 242