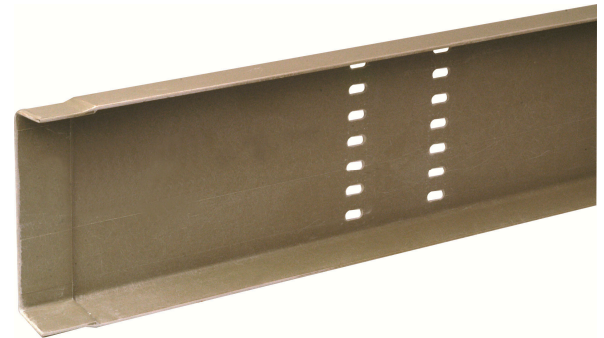


## MARSHALL-TUFFLEX GRP INSTALLED IN WHITECHAPEL ELIZABETH LINE STATION

Marshall-Tufflex Glass Reinforced Polyester (GRP) perforated trays, channels and brackets have been installed in London's new Whitechapel Elizabeth line station.

Having met Crossrail material compliance requirements and standards, the GRP cable management products were installed in Whitechapel station's earthing zones. The install began in May 2017 and was completed in November 2018.

Up to 40% lighter than steel but strong and with interlocking and self-adjusting couplings, GRP is perfect for such an environment due to its high fire safety performance, robustness, corrosion resistance and sustainability. The trays have a large cable capacity, offer scope for on-site configuration and, from the contractor's perspective, need no special tools, de-burring, painting or earth bonding. Effective at temperatures between -80°C to +130°C, they have low conductivity, are self-extinguishing in the event of fire and utilise zero halogen material which is classified as 'low smoke'.



Marshall-Tufflex GRP cable management solutions meet a wide range of requirements for UK rail infrastructure and are ideal for installation into tunnels, bridges and water ingress environments. With a large cable capacity, fast and flexible installation and the option of on-site assembly and configuration, GRP cable tray has been designed to provide fire and corrosion resistance as well as a long service life. They are easier to handle than their metal equivalents, reduce overall weight loading on a structure and are effective at temperatures from -80°C to +130°C.

The company is registered with the RISQS Railway Industry Supplier Qualification scheme which covers products/services procured by the rail industry. The scheme supports Network Rail, Transport for London (TfL)/London Underground Ltd, nationwide train operators and other rail product and service providers in the management of supply chain risk.



*Visit [www.marshall-tufflex.com](http://www.marshall-tufflex.com) to find out more about GRP cable management solutions.*