

CIRCULAR DRY LINING BOXES



**Quick to install loop in
circular boxes featuring
large wings for an
easy and secure fit**

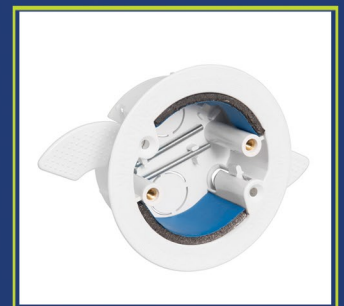


- Double back entry loop in circular box
- Large white spring out clamps/wings for easy installation into ceilings
- 34mm Internal box depth
- 70mm cut-out
- Fixing Centre 50.8/60.3mm
- Available with intumescent fire barrier pads



code
MDCRB2WH

pack
10



code
MDCRB2FWH

pack
10

Marshall-Tufflex Ltd

55-65 Castleham Road, St Leonards on Sea,
East Sussex, TN38 9NU

T: +44 (0)1424 856600
sales@marshall-tufflex.com