

MARSHALL-TUFFLEX

Sterling Curve Trunking

INSTALLATION INSTRUCTIONS



UK OWNED
UK MANUFACTURER



<p>PLANNING INSTALLATION Establish layout, paying attention to; direction of changes, Feed position & Component spacing.</p> <p>CLEANING The exterior should be cleaned using a damp cloth.</p> <p>DISPOSAL The product and packaging should be disposed of via standard civic amenity facilities. Note, Marshall-Tufflex PVC-U products are 100% recyclable.</p> <p>In accordance with current IET wiring regulations BS 7671, assembly and connection is to be carried out by a qualified electrician or other competent person. In addition, when installing electrical products, personal protective equipment must meet the current version of the Personal Protective Equipment at Work Regulations.</p> <p>For product classification refer to DOC02589 (Dado) or DOC02598 (Skirting). Additionally, 1 and 2 Gang Frames conform to the requirements of BS 4662 where applicable. If you are in any doubt regarding the installation or application of the product, please contact: The Technical Team on +44 (0) 1424 856688</p> <p>PVC-U expands / contracts at a uniform rate of approx. 7mm in 4m length for a temperature change of 25°C</p>	
<p>[1] When fitting trunking be mindful of</p> <p>When used as a skirting system or run against a vertical wall, sufficient clearance must be allowed for between floor covering or wall and the profile fittings that clip over the covers (End Cap, Coupler, Flat Angle and Flat Tee)</p>	<p>[2] Base and Covers</p> <p>To cut the trunking, use a fine-toothed panel or power jigsaw. Allow 3mm between each successive length of base for thermal expansion. Every cover to be cut back by 8mm from the end of the base</p> <p>To fasten the base use No.8 round head screws & washers, avoid over tightening to permit thermal movement. Alternative top and bottom fixing at 200mm centres using pre-punched slots. Use of plastic caps over screw heads is recommended to protect cables.</p>
<p>[3] Retention of Fittings</p> <p>All fittings clip into the trunking base with exception of the End Caps. No additional fastening device is necessary. All are provided with a generous 10mm overlap at joints, to accommodate thermal expansion and to compensate for errors in cutting.</p>	<p>[4] Secured End Cap</p> <p>End Caps butt up to the end of the base. Fixing screws are required for retention of end cap to meet classification. No.8 screws are recommended.</p>

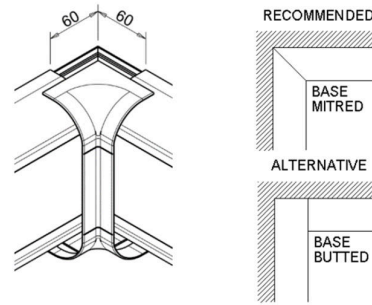
[5] Internal & External Bends

Base can be mitred 45° to ensure total enclosure of cables or for external bend base can be cut square to wall.



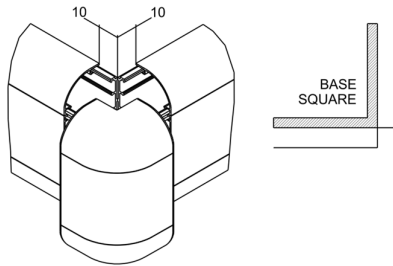
Allow 3mm gap for thermal expansion.

[6] Internal Bends



After fixing base to corner, fit covers with offset as shown then clip internal bend in place.

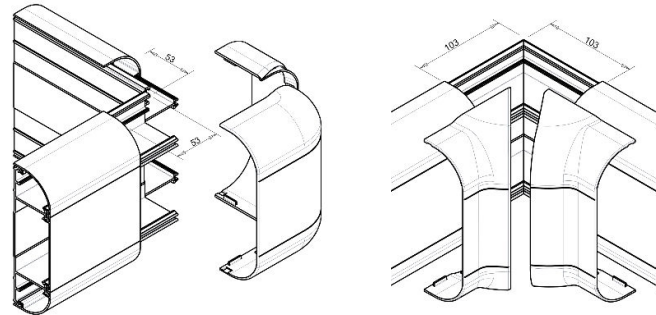
[7] External Bends



After fixing base to corner, fit covers with offset as shown then clip external bend in place.

[8] Adjustable Bends

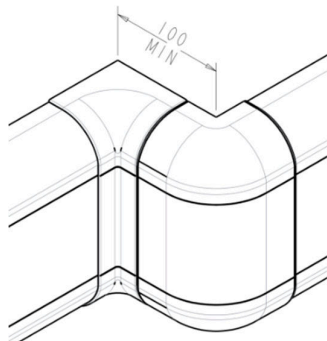
Adjustable bends (internal and external) can be used where walls are not perfectly square. Bends are designed to fit corners that are between 85 – 95°, to fit (External Bend) butt trunking up to corner and fit lids allowing 53mm gap from end of trunking to lids, clip covers in place with shortest cover first.



To fit (Internal Bend) mitre trunking base and fit lids allowing 103mm gap from end of trunking to lids, clip covers in place.

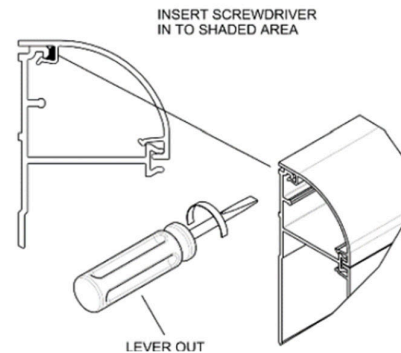
[9] Offset Dimensions

The minimum set that can be accommodated in the same plane (from internal to external bend)

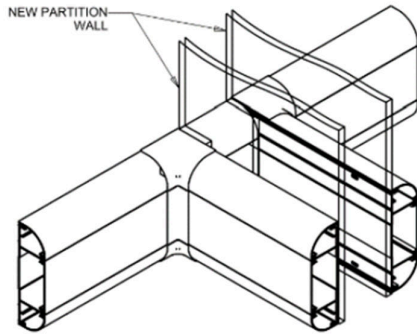


[10] Cover removal

The lids have been designed to remain in position irrespective of impact during normal conditions and minor undulations of the fixing surface. Lids are designed to limit their unauthorised removal. All lids peel off, although curved and square lids can be eased from the base by inserting a screwdriver between the captive legs of the lid and base. The lids can then be peeled from the base.

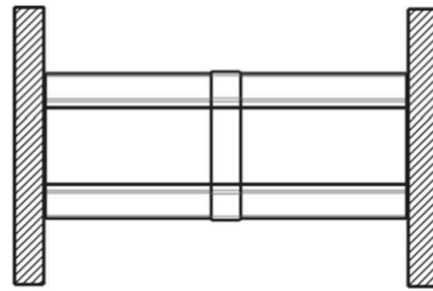


[11] Method of Continuation Through a Partition Wall



Continue the main lateral run of base through the partition with short lengths of cover fitted where the trunking passes through the partition. The partition wall trunking is then butted up to the main run and the joint covered by an internal bend.

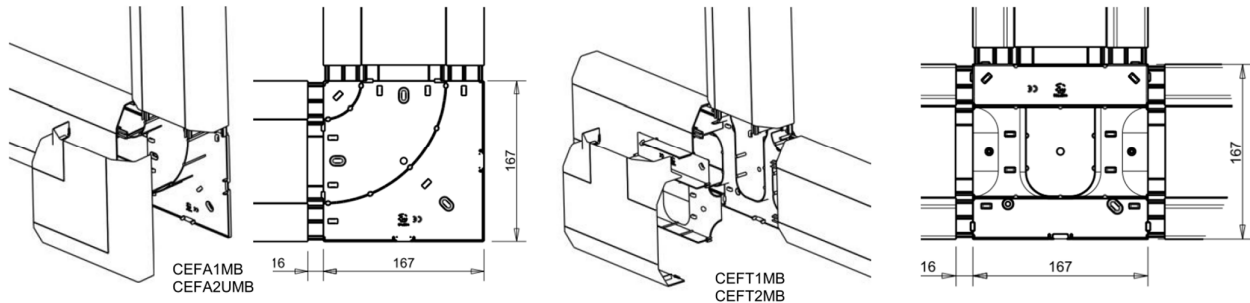
[12] Short Length



To fit a single length of trunking (under 3 metres) between two inside walls and with no accessory box fitted; if is advisable to install a coupler in the centre of the run to faceplate the removal of the cover.

[13] Flat Angle and Flat Tee

Flat angle and Flat tee are supplied with radius control as standard, these need to be fitted to the wall first with the trunking base butted up to the moulded radius control.



The covers clip over the base with the trunking lids set back 16mm from the end of the trunking. No couplers are required as Angle Cover / Tee Cover overlap the trunking lids.

If the Covers are purchased without radius control the base extrusion should be mitred with the covers recessed by 183mm from the back of the trunking.

[14] Mini Trunking and Round Conduit Adaptor

Fitting of universal adaptor for MMT2 and MMT4 Mini Trunking or 20 and 25mm Round Conduit.

