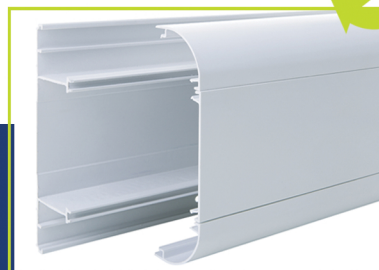


# STERLING CURVE

**A sleek and stylishly curved three compartment trunking for skirting or dado installations**

COMPLIANT UP TO  
**...CAT 7A...**



Sterling Curve has a gently contoured profile that stops clutter, avoids dust traps and makes cleaning easy. Suitable for dado & skirting use, the three compartment 167 x 50mm system includes single piece moulded fittings and flat tees/angles with integral bend radius control.

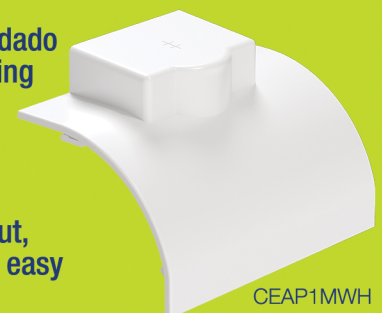
- Compliant up to Cat 7a
- Standard bend radius 25mm
- Adjustable data box 32-40mm
- Adjustable internal and external bends
- Steel screening divider available
- Boxes available to comply with Part M
- Data fittings for bend radius up to 50mm
- Dado version available with BIO properties within the PVC-U material to deliver ongoing antimicrobial protection

## NEW

### Mini trunking/conduit adaptor

Connect Sterling Curve dado to conduit or mini trunking by using this useful adaptor

Complete with a handy drill centre and knock out, installation is quick and easy



CEAP1MWH

Marshall-Tufflex Ltd  
55-65 Castleham Road, St Leonards on Sea  
East Sussex, TN38 9NU

Tel: 01424 856600  
[www.marshall-tufflex.com](http://www.marshall-tufflex.com)