

# BENCH TRUNKING ALUMINIUM

Bench trunking aluminium is a robust angled trunking that can be mounted directly on to desks, work benches or fitted under shelving.

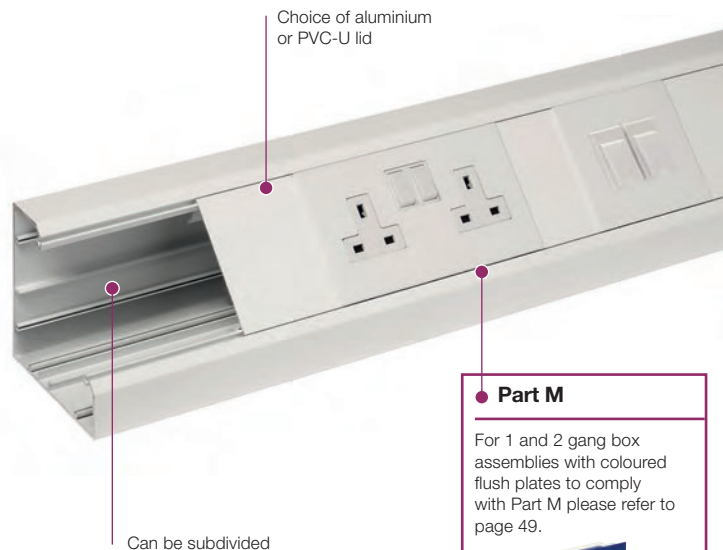
## Product information

- 105 x 105mm
- Suitable for desk, bench or worktop applications
- Can be subdivided
- Aluminium systems specified with polycarbonate fittings meet accepted requirements for LSOH

## Data information

- Compliant up to Cat 7a
- Adjustable data box 32-40mm

**Note:** Allowance must be made for earthing the trunking system to comply with the current version of the BS 7671 Wiring Regulations.



COMPLIANT UP TO  
...CAT 7A...

## Part M

For 1 and 2 gang box assemblies with coloured flush plates to comply with Part M please refer to page 49.



These products are manufactured from PVC-U and are not LSOH

Standard Colours	
WH	SG
WH: White	SG: Silver Grey

**Colour code suffix:** to indicate the finish you require, add the required colour code to the end of the product code.

## Basic components



### Base unit

code	size	pack
MBTAB105SG	105 x 105mm	1 x 3m



### Cover

code	material	pack
MBTAL105SG	aluminium	1 x 3m
ETL1WH	PVC-U	8 x 3m

## Aluminium base and PVC-U cover

Our PVC-U cover is compatible with our aluminium base. Order ETL1WH PVC-U cover



### Dividing fillet (PVC-U)

code	pack
BDF105WH	4 x 3m

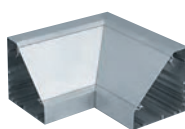
## Fittings



### End cap (steel)

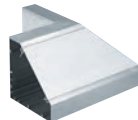
code	pack
BECA105SG	1

Supplied with fixing screws  
Recommended for use  
with LBS3 (see page 81)



### Internal angle (aluminium)

code	pack
BIAA105SG	1



### External angle (aluminium)

code	pack
BEAA105SG	1

For components and boxes see page 81

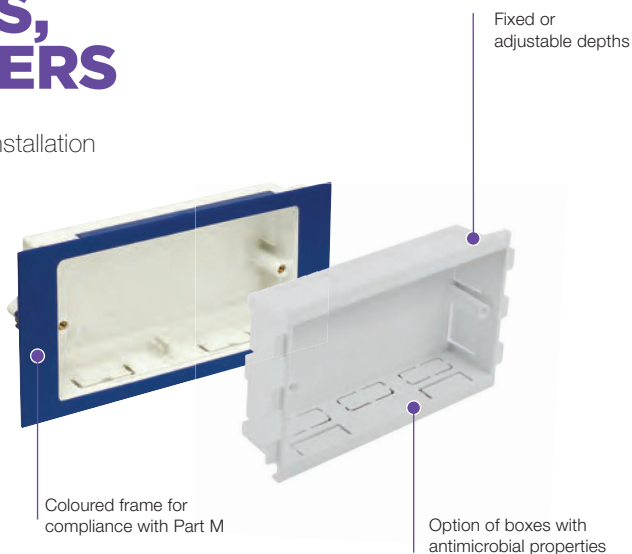
# ACCESSORY BOXES, PLATES AND SPACERS

A range of white and coloured accessory boxes for installation into our trunking systems.

## Product information

- Accept standard UK accessories
- Standard screw fixing centres
- Adjustable depth
- Coloured options in blue RAL 5002 and black RAL 9005
- Accessory boxes manufactured with antimicrobial properties for use with Sterling Curve Bio (ESSB1BIOWH and ESSB2BIOWH).

Approved Document M of the UK Building Regulations for Visual Impairment requires that face plates differ in colour from their background. Coloured accessory boxes provide a different colour frame to contrast against standard white accessories.



## Boxes for UK accessories



### \*RCD/MCB Housing

code	pack
EAHCA1MWH	1

\*Up to 4 modules can be accommodated

**Note:** RCDs are not supplied by Marshall-Tufflex



### 1 gang accessory box (30mm deep)

code	colour	pack
ESSB1WH	white	20
ESSB1BIOWH	white bio	20
ESSB1BK	black	20



### 2 gang accessory box (30mm deep)

code	colour	pack
ESSB2WH	white	10
ESSB2BIOWH	white bio	10
ESSB2BK	black	10



### 1 gang adjustable depth box

code	depth	pack
EAB1WH	32 – 47mm	10



### 2 gang adjustable depth box

code	depth	pack
EAB2WH	32 – 47mm	5



### Accessory box spacer

code	size	colour	pack
ES1WH	14mm	white	4

For use between accessory boxes



### 1 gang accessory plate

code	pack
ESSP1WH	2



### 2 gang accessory plate

code	pack
ESSP2WH	2

## DDA / Part M boxes and spacers



### 1 gang accessory box (30mm deep)

code	colour	pack
ESPM1BU	blue	1
ESPM1BK	black	1



### 2 gang accessory box (30mm deep)

code	colour	pack
ESPM2BU	blue	1
ESPM2BK	black	1



### Retrofit accessory box spacer

code	description	pack
ES3BU	blue	4
ES3BK	black	4



### Accessory box spacer (14mm)

code	description	pack
ES1BK	black	4

For use between accessory boxes

Please note, these boxes are not suitable for use with Odyssey trunking. Boxes for Odyssey trunking are shown with the range on page 27.

## Components

**Earth bonding kit**

code	description	pack
LBT3		1

**Coupler pin**

code	description	pack
LDP1	ø2.0 x 20mm	10

To aid alignment of base profiles

**Bonding strap**

code	description	pack
LBS1	base to base 32 amp	5

**Bonding strap**

code	description	pack
LBS2	cover to base	5

**Bonding strap**

code	description	pack
LBS5	end cap to base	1

**End cap bonding strap**

code	description	pack
LBS3		1

## Boxes and plates (polycarbonate)

**RCD/MCB housing**

code	description	pack
EAHCA1MWH	polycarbonate	1

Not available in silver grey.

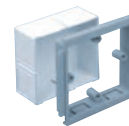
\*Up to 4 modules can be accommodated.

**Note:** RCDs and MCBs are not supplied by Marshall-Tufflex**1 gang accessory box  
30mm deep**

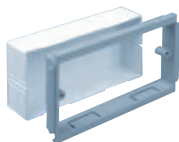
code	description	pack
ESSB1SG		1
ESSBA1WH		1

**2 gang accessory box  
30mm deep**

code	description	pack
ESSB2SG		1
ESSBA2WH		1

**1 gang adjustable  
depth box**

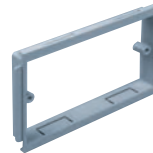
code	depth	pack
EAB1SG	32-47mm	1

**2 gang adjustable  
depth box**

code	depth	pack
EAB2SG	32-47mm	1

**1 gang accessory  
plate**

code	description	pack
ESSP1SG		2

**2 gang accessory  
plate**

code	description	pack
ESSP2SG		2