

CABLE TROUGHING

GRP cable troughing is ideally suited to railway applications where cable ducts cannot be buried.

Product information

- 150 and 250 x 150mm
- Self-supporting base
- High mechanical loading capacity
- One post every 6m
- Lightweight product
- Only one person required for installation



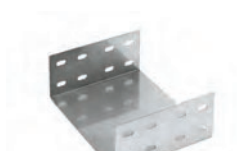
GRP is a non-conductive material with excellent fire performance and high corrosion resistance

Basic components



Base and pre-mounted connector 6M

code	size	pack
SP150150	150 x 150mm	1
SP250150	250 x 150mm	1



U-Shaped connector

code	to fit	pack
SPIH150150	150 x 150mm	1
SPIH250150	250 x 150mm	1



Splice plate

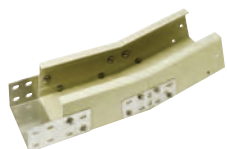
code	to fit	pack
KKIH50	150 x 150mm	1



Cable trough covers 3m

code	to fit	pack
KKDL150	150 x 150mm	1
KKDL250	250 x 150mm	1

Fittings



Internal vertical elbow 15°

code	size	pack
SPBI150	150 x 150mm	1
SPBI250	250 x 150mm	1



Cover for internal vertical elbow 15°

code	to fit	pack
SPBID150	150 x 150mm	1
SPBID250	250 x 150mm	1



External vertical elbow 15°

code	size	pack
SPBA150	150 x 150mm	1
SPBA250	250 x 150mm	1



Cover for external vertical elbow 15°

code	to fit	pack
SPBAD150	150 x 150mm	1
SPBAD250	250 x 150mm	1



Horizontal elbow 15°

code	size	pack
SPB150	150 x 150mm	1
SPB250	250 x 150mm	1



Cover for horizontal elbow 15°

code	to fit	pack
SPBD150	150 x 150mm	1
SPBD250	250 x 150mm	1

Fittings



Steel post 1500mm

code	to fit	pack
SPP100150	150/250 x 150mm	1



Steel post 2000mm

code	to fit	pack
SPP100200	150/250 x 150mm	1



Steel post 2500mm

code	to fit	pack
SPP100250	150/250 x 150mm	1



Steel mounting plate

code	to fit	pack
SPC100150	150 x 150mm	1
SPC100250	250 x 150mm	1



HDG steel cable out fitting with bolts

code	to fit	pack
SPKA	150/250 x 150mm	1



316 SS bolts and nuts for SPIH/KKIH

code	to fit	pack
SPM1025	for 150/250 x 150mm	1



HDG steel bolts, nuts and U-shaped washers

code	to fit	pack
SPM1025/HDG	150/250 x 150mm	1