

CHALLENGER TRUNKING

The Challenger three compartment trunking system is compliant up to Cat 7a and suitable for office, school or college environments.

This easy to install system, can be fitted at dado or skirting level and includes a pre-drilled base to speed up installation.

- 167 x 50mm
- Three segregated compartments
- Suitable for dado and skirting application
- Single piece moulded fittings
- Flat tees and flat angles with integral bend radius control
- Self-extinguishing and non-flame propagating PVC-U
- Recycled PVC-U is utilised in the manufacturing process



Data Information

- Compliant up to Cat 7a
- Standard bend radius 25mm

COMPLIANT UP TO
CAT 7A

Standard finish
WH
WH: WHITE



Challenger dado trunking assembly is manufactured using 55% recycled material



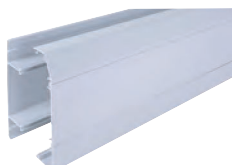
Challenger skirting trunking assembly is manufactured using 52% recycled material

Trunking profiles



Challenger dado trunking assembly

code	width x height	pack
XT1CWH	167 x 50mm	1 x 3m



Challenger skirting trunking assembly

code	width x height	pack
XT2CWH	167 x 50mm	1 x 3m

Basic components



Base unit

code	pack
XT1BWH	4 x 3m



Main compartment cover

code	pack
XT1CLWH	8 x 3m



Angled cover

code	pack
XT1TBWH	8 x 3m



Square cover

code	pack
XT2TBWH	8 x 3m

Dado fittings

**Coupler**

code	pack
XT1C0WH	2

**End cap**

code	pack
XT1ECWH	2

**Internal bend**

code	pack
XT1IBWH	2

**External bend**

code	pack
XT1EBWH	2

**Flat angle**

code	pack
XT1FAWH (Moulded)	1

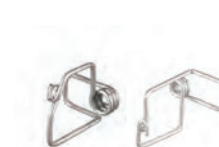
**Flat tee**

code	pack
XT1FTWH (Moulded)	1

Fire clips

**Fire clip centre compartment**

code	pack
FCSPC	50

**Fire clip angle/square compartment**

code	comp	pack
FCSPAC	angle	100
FCSPS	square	100

For fire clip fixings, please see page 65

Skirting fittings

**Coupler**

code	pack
XT2C0WH	2

**End cap**

code	description	pack
XT2ECLWH	left	2
XT2ECRW	right	2

**Internal bend**

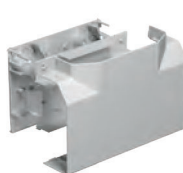
code	pack
XT2IBWH	2

**External bend**

code	pack
XT2EBWH	2

**Flat angle - upward**

code	description	pack
XT2FAUWH	moulded	1

**Flat tee - upward**

code	description	pack
XT2FTUWH	moulded	1

Skirting - horizontal.
Dado - vertical.

Accessory boxes

**1 gang outlet box**

code	depth	pack
XTBB1WH	30mm	20

**2 gang outlet box**

code	depth	pack
XTBB2WH	30mm	10

Fittings

**Angled mini trunking adapter**

code	fit	pack
EATA2WH	MMT2	5
EATA4WH	MMT4	5