

# IN-SCREED FLOORING SYSTEMS

A range of floor outlet boxes, fittings and plates in galvanised steel, with choice of PVC-U or steel ducting designed to be positioned within screed flooring.

## Product information

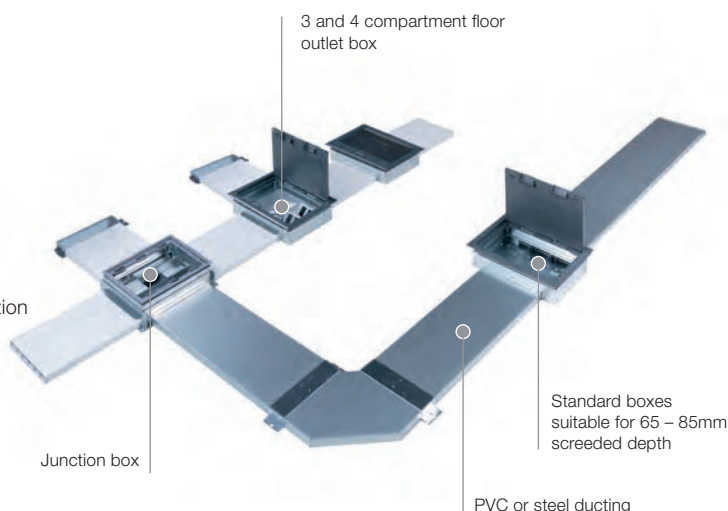
- 3 and 4 compartments (boxes come with extra divider to make 4 compartments)
- Suitable for 65-85mm screed depth
- Boxes for deeper floor screed available on request
- Lid recess to suit up to 6mm carpet tile
- For advice on box tray lids for non-standard floor finishes please contact our Technical Team
- Adjustable for box trim height
- Grey moulded carpet trim for floor outlet boxes
- Steel trims with various finishes available
- Universal junction box with integral, fully-reversible cable segregation

### Standard floor box trim

GY

GY: Grey  
RAL7011 (floor box trim)

**Other trim finishes:** Floor boxes can be provided with a variety of trim finishes such as brass, stainless steel and painted colours. For further information please contact the Technical Team on +44 (0)1424 856688.



## Floor materials

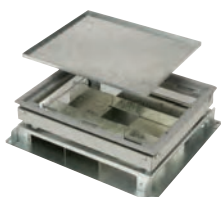
Marshall-Tufflex can supply floor outlet boxes and junction boxes that are suitable for different floor materials, such as marble, stone or wood, or where a higher IP rating is required. For more information on these, please contact our Technical Team on +44 (0)1424 856688.

Basic components



**Floor outlet box  
3 & 4 Comp. including lid**

code	size	pack
USF32	357 x 257mm	1



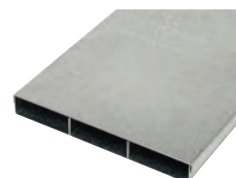
**Universal junction box  
(excluding adaptors)**

code	size	pack
USJ3	269 x 234mm	1



**Twin section PVC-U duct  
(three ducts required per run)**

code	size	pack
MTU125	75 x 25mm	8 x 3m



**3 Compartment steel duct**

code	description	pack
USFT25	225 x 25mm	1 x 2.5m

Please see page 106 for the full range of accessory plates



**Blank end**

code	description	pack
USFB1	3 x 20mm KO	1
USFB25	6 x 25mm KO	1



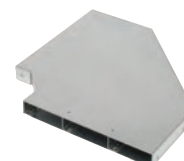
**Adaptor**

code	pack
USFA1	1



**Coupler**

code	pack
USFC1	1



**Flat bend  
(excluding connector)**

code	description	pack
USFF1	steel	1
HFP125BK	PVC-U	1



**Riser  
(excluding connector)**

code	description	pack
USFV1	steel	1
HVP125	PVC-U	1



**Steel screeding plate**

code	pack
USFSP1	1

**Note:** Used in place of box lid when screeding.  
Minimum order quantities apply

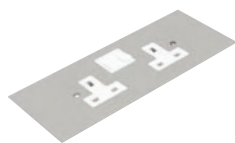


**Floor box lid assembly**

code	description	pack
UMLD1	Plastic	1
UMLD3	Steel	1

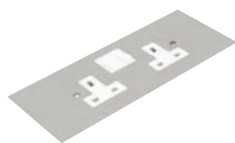
# ACCESSORY PLATES

## Accessory plates



**13Amp 2 gang DP/TE switched socket**

code	description	pack
UP651	3 comp	1
UP751	4 comp	1



**13Amp 2 gang DP/TE switched socket clean earth**

code	description	pack
UP653	3 comp	1
UP753	4 comp	1



**Single plate 13Amp 2x2 gang DP/TE switched socket**

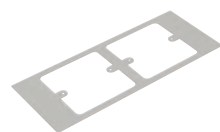
code	description	pack
UP751D	4 comp	1
UP753D	4 comp CE	1



**13Amp 2 gang DP/RCD switched socket**

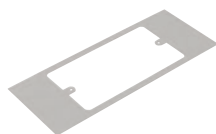
code	description	pack
UP660	3 comp Std	1
UP663	3 comp CE	1
UP760	4 comp Std	1
UP763	4 comp CE	1

Not suitable for use with in-screed system.



**Plate to accept 2 x 1 gang accessory (M3.5 x 60.3mm)**

code	description	pack
UP633	3 comp	1



**Plate to accept 1 x 2 gang accessory (M3.5 x 120.3mm)**

code	description	pack
UP632	3 comp	1

### Plate dimensions

3 compartment = 185 x 95mm  
4 compartment = 185 x 71mm

### Plate material

Plates are manufactured from plain galvanised steel to match floor boxes.

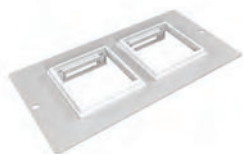
### Important

Design of leads, plugs and sockets can vary so thought is required when configuring plates to avoid the clashing of cables which could prevent the floor box lid from closing.



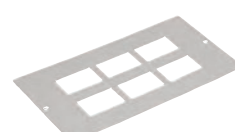
**Blank plate**

code	description	pack
UP621	3 comp	1
UP721	4 comp	1



**Euro plate and collar 2 gang**

code	description	pack
UP615	3 comp	1
UP715	4 comp	1



**Data/voice plate 6 x RJ45**

code	description	pack
UP612	3 comp	1
UP712	4 comp	1

6 x 37mm x 22mm cut outs



**Data/voice plate 4 x RJ45**

code	description	pack
UP610	3 comp	1
UP710	4 comp	1

4 x 37mm x 22mm cut outs



**Data wave plate 4 x RJ45**

code	description	pack
UP617	3 comp	1

4 x 37mm x 22mm cut outs



**Data wave plate 2 x RJ45**

code	description	pack
UP717	4 comp	1

2 x 37mm x 22mm cut outs



**Black 6C blank plate**

code	description	pack
UDC1000		1



**Black Cat 6 IDC data module**

code	description	pack
UDC1001		1



**Black Cat 6 module assembly**

code	length	pack
UDC1002	3m	1
UDC1003	5m	1



**300mm launch lead F/F**

code	description	pack
UDC1004	VGA	1
UDC1005	USB	1
UDC1006	HDMI	1
UDC1007	Jack - 3.5mm	1

## Modules and leads