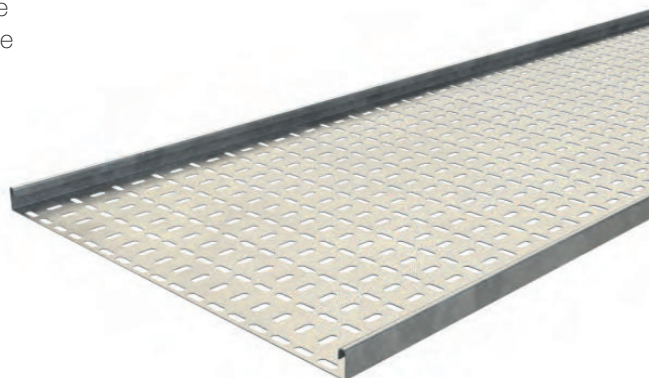


METAL CABLE TRAY

Basor metal cable tray is ideal for the support of power and data cables in commercial and industrial installations. Sections of metal tray are simply bolted together for quick and easy installation, saving time and eliminating the need for separate couplers.

- Light, medium and heavy duty
- Product widths of 50 to 600mm
- Fast-coupling
- Reduced installation time, saving labour costs
- Pre-galvanised finish
- No couplers required
- Full range of fittings



Standard finish
PG
PG: Pre-galvanised

Metal tray is available pre-galvanised as standard.

We can provide a quotation for hot dip galvanised (GC) or stainless steel (316) finishes to suit exterior installations but these are subject to longer lead times.

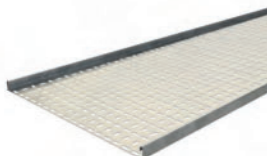
Cable tray



Cable tray - light duty

code	width x height	pack
203658 *	50 x 12mm	1 x 3m
203659	75 x 12mm	1 x 3m
203660	100 x 12mm	1 x 3m
203661	150 x 12mm	1 x 3m
203662	225 x 12mm	1 x 3m
203663	300 x 12mm	1 x 3m

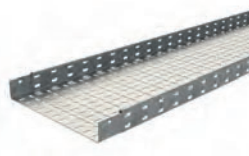
* 50 x 12mm not available as fast coupling - couplers are required.



Cable tray - medium duty

code	width x height	pack
203708 *	50 x 25mm	1 x 3m
203709	75 x 25mm	1 x 3m
203710	100 x 25mm	1 x 3m
203711	150 x 25mm	1 x 3m
203712	225 x 25mm	1 x 3m
203713	300 x 25mm	1 x 3m
203714	450 x 25mm	1 x 3m
203715	600 x 25mm	1 x 3m

* 50 x 25mm not available as fast coupling - couplers are required.



Cable tray - heavy duty

code	width x height	pack
203785	75 x 50mm	1 x 3m
203786	100 x 50mm	1 x 3m
203787	150 x 50mm	1 x 3m
203788	225 x 50mm	1 x 3m
203789	300 x 50mm	1 x 3m
203790	450 x 50mm	1 x 3m
203791	600 x 50mm	1 x 3m



Divider profile 3m

code	pack
MT2/3476	10 x 3m



90 degree flat bend

code	width	pack
204321	50mm	1
203669	75mm	1
203670	100mm	1
203671	150mm	1
203672	225mm	1
203673	300mm	1



45 degree flat bend

code	width	pack
225465	50mm	1
225466	75mm	1
225467	100mm	1
225468	150mm	1
225469	225mm	1
225470	300mm	1



Equal tee

code	width	pack
203688	50mm	1
203689	75mm	1
203690	100mm	1
203691	150mm	1
203692	225mm	1
203693	300mm	1



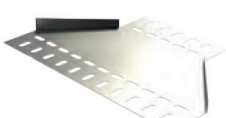
Adjustable riser

code	width	pack
204229	50mm	1
204230	75mm	1
204231	100mm	1
204232	150mm	1
204233	225mm	1
204234	300mm	1



4-way equal cross

code	width	pack
203698	50mm	1
203699	75mm	1
203700	100mm	1
203701	150mm	1
203702	225mm	1
203703	300mm	1



Reducer

code	width	pack
226033	150 x 50mm	1
226034	300 x 150mm	1

Light duty fittings

Medium duty fittings



90 degree flat bend

code	width	pack
203745	50mm	1
203746	75mm	1
203747	100mm	1
203748	150mm	1
203749	225mm	1
203750	300mm	1
203751	450mm	1
203752	600mm	1



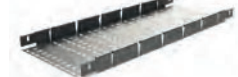
45 degree flat bend

code	width	pack
225471	50mm	1
225472	75mm	1
225475	225mm	1
225476	300mm	1
225477	450mm	1
225478	600mm	1



Equal tee

code	width	pack
203765	50mm	1
203766	75mm	1
203767	100mm	1
203768	150mm	1
203769	225mm	1
203770	300mm	1
203771	450mm	1
203772	600mm	1



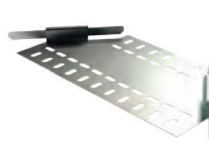
Adjustable riser

code	width	pack
204239	50mm	1
204240	75mm	1
204241	100mm	1
204242	150mm	1
204243	225mm	1
204244	300mm	1
204245	450mm	1
204246	600mm	1



4-way equal cross

code	width	pack
203775	50mm	1
203776	75mm	1
203777	100mm	1
203778	150mm	1
203779	225mm	1
203780	300mm	1
203781	450mm	1
203782	600mm	1



Reducer

code	width	pack
226035	150 x 50mm	1
226036	300 x 150mm	1
226037	300 x 225mm	1
226038	450 x 300mm	1
226039	600 x 300mm	1

Heavy duty fittings



90 degree flat bend

code	width	pack
203811	75mm	1
203812	100mm	1
203813	150mm	1
203814	225mm	1
203815	300mm	1
203816	450mm	1
203817	600mm	1



45 degree flat bend

code	width	pack
225481	75mm	1
225482	100mm	1
225483	150mm	1
225484	225mm	1
225485	300mm	1
225486	450mm	1
225487	600mm	1



Equal tee

code	width	pack
203829	75mm	1
203830	100mm	1
203831	150mm	1
203832	225mm	1
203833	300mm	1
203834	450mm	1
203835	600mm	1



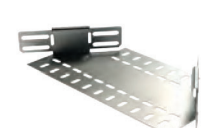
Adjustable riser

code	width	pack
204249	75mm	1
204250	100mm	1
204251	150mm	1
204252	225mm	1
204253	300mm	1
204254	450mm	1
204255	600mm	1



4-way equal cross

code	width	pack
203838	75mm	1
203839	100mm	1
203840	150mm	1
203841	225mm	1
203842	300mm	1
203843	450mm	1
203844	600mm	1



Reducer

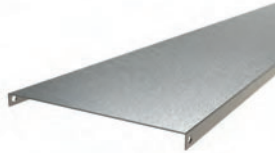
code	width	pack
226040	300 x 150mm	1
226041	300 x 225mm	1
226042	450 x 300mm	1
226043	600 x 300mm	1

See next page for fixing accessories and fittings.



Support strut legs with suspension frame.

Fixing accessories

**Tray cover**

code	width	pack
220067	50mm	1 x 2m
215521	75mm	1 x 3m
215522	100mm	1 x 3m
215523	150mm	1 x 3m
215524	225mm	1 x 3m
215525	300mm	1 x 3m
215526	450mm	1 x 3m
215527	600mm	1 x 3m

**Cover fixing clamp**

code	height	pack
214474	12mm	100
214476	25mm	100

**Fish plate**

code	width	pack
214480	75mm	1
214481	100mm	1
214482	150mm	1
214483	225mm	1
214484	300mm	1
214485	450mm	1
214486	600mm	1

**Inside splice 12/25/50mm**

code	height	pack
203800	50mm	1

**Outside splice**

code	height	pack
203724	25mm	1
203801	50mm	1

**GC nuts and bolts**

code		pack
206826	Hot dip galvanised	100

For use with all fixing accessories, brackets and frames

Fittings

**Ceiling bracket
(height 175mm)**

code	description	pack
MT2/7235	100mm	1
MT2/7236	150mm	1
MT2/7237	200mm	1
MT2/7238	300mm	1

**Wall bracket**

code	description	pack
MT2/7230	100mm	1
MT2/7231	150mm	1
MT2/7232	200mm	1
MT2/7233	300mm	1
MT2/7234	400mm	1

**Wall bracket supporting piece**

code	pack
MT2/6240	1

**Suspension frame base
(rods sold separately)**

code	description	pack
MT2/3630	100mm	1
MT2/1073	150mm	1
MT2/1074	200mm	1
MT2/1076	300mm	1
MT2/3629	400mm	1
MT2/1077	500mm	1
MT2/5941	600mm	1

**Support strut leg**

code	leg height	pack
MT2/5602	142mm	1

**Stand off bracket**

code	description	pack
MT2/1046	100mm	1
MT2/1047	150mm	1
MT2/1048	200mm	1
MT2/1049	300mm	1
MT2/3413	400mm	1
MT2/3414	500mm	1
MT2/3415	600mm	1

**Variable support bracket**

code	pack
MT2/6477	10

**M8 threaded rod**

code	pack
MT2/3397	10 x 1m

For use with suspension frame

**M8 nut**

code	pack
2/17553	10