

# RAISED FLOOR BOXES AND GROMMETS

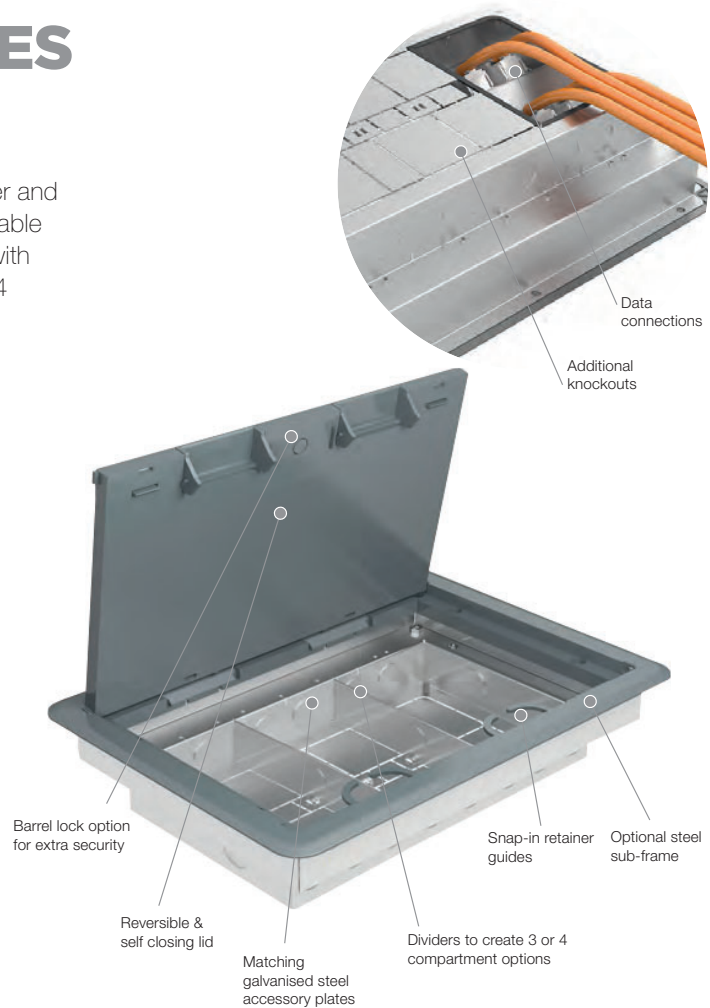
A high quality range of raised floor boxes to provide power and data to desks within the modern office environment. Available as standard or heavy duty versions, boxes are supplied with dividers for quick and easy configuration as either a 3 or 4 compartment box.

## Product information

- Standard depth 83mm
- Supplied with dividers to create 3 or 4 compartment box
- Two earth fixing points for flexible positioning of sockets
- 3mm thick medium load plate
- Fixings are pre-punched for quick and easy installation
- Supplied with metal screws to attach trim to box for a secure fix
- Steel sub-frame option for heavy traffic and fine adjustment to allow for uneven flooring
- Supplied with two snap-in cable retainers/guides
- Lid recess to suit up to 6mm carpet tile
- Reversible and self closing lid for extra safety and security
- Barrel lock option available for extra security
- Knockouts in the base for better access
- Data connections to meet data cable specifications

Standard finish
GY
GY: Grey RAL7011 (floor box trim)

Designed and manufactured to  
 BS EN 61534-22:2014+A11:2021  
 BS EN 60670-1:2005+A1:2013  
 BS EN 60670-23:2008  
 BS EN 50085-14:2005+A1:2013  
 BS EN 50085-2-2:2008



## Pre-wired floor boxes



**3 compartment standard pre-wired box with 3m tap-off 357 x 257 x 83mm**

code	description	pack
UPW400	1 x 2 gang Std	1
UPW420	2 x 2 gang Std	1



**3 compartment CE pre-wired box with 3m tap-off 357 x 257 x 83mm**

code	description	pack
UPW405	1 x 2 gang CE	1
UPW425	2 x 2 gang CE	1



**4 compartment standard pre-wired box with 3m tap-off 357 x 257 x 83mm**

code	description	pack
UPW410	1 x 2 gang Std	1
UPW430	2 x 2 gang Std	1



**4 compartment CE pre-wired box with 3m tap-off 357 x 257 x 83mm**

code	description	pack
UPW415	1 x 2 gang CE	1
UPW435	2 x 2 gang CE	1

## Raised floor boxes



**Empty floor box**

code	description	pack
UM1000	Plastic lid & trim	1
UM1500	Steel lid & trim	1



**Floor box pre-fitted with 3 x UP632 plates**

code	description	pack
UM3010	3 x UP632	1

Ready to accept standard twin gang sockets.

Please note to avoid clearance and lid closing issues we recommend a 9.5mm maximum depth of socket plate be used.

## Accessories



**Sub-frame assembly**

code	description	pack
UMSF1		1



**Lock kit**

code	description	pack
UMLK1		1



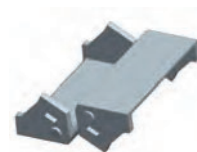
**Raised floor box trim**

code	description	pack
UMLD4	Plastic	1



**Raised floor lid assembly**

code	description	pack
UMLD1	Plastic	1
UMLD3	Steel	1



**Replacement cable flaps pack**

code	description	pack
UMCB1		1

For plastic lid assembly only

## Floor grommets



**Floor grommet**

code	description	pack
UTG1BK	without foam insert	1
UTG1GY	without foam insert	1



**Floor power grommet**

code	description	pack
UPG1BK	with foam insert	1
UPG1GY	with foam insert	1

Cut out size for above grommets Ø125mm

**Please note** the floor box grommets are available in black BK (RAL9004) and grey GY (RAL7037).