

STERLING CURVE

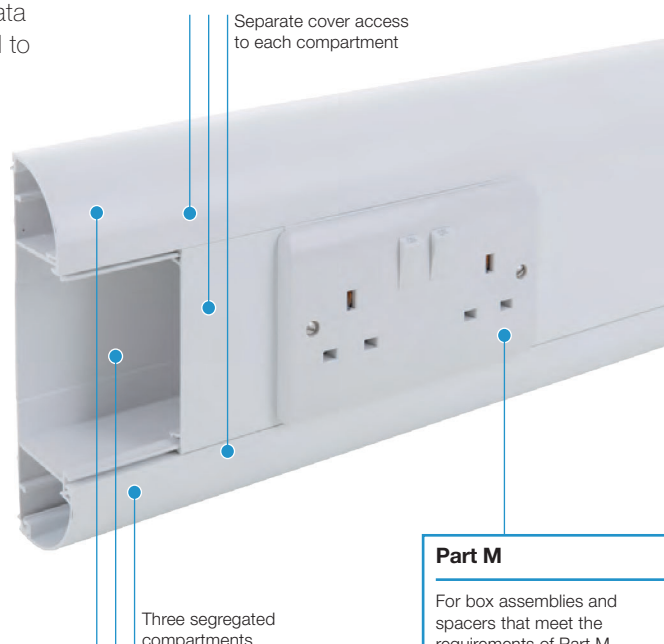
Sterling Curve is a stylish, three compartment, medium sized trunking suitable for dado or skirting installation. This adaptable and easy to use system has one or two curved data compartments designed to stop clutter, avoid dust traps and to make cleaning easy.

Product information

- 167 x 50mm
- 3 segregated compartments
- Suitable for dado and skirting application
- Boxes available to comply with Part M (DDA)
- ETL1 lid is available in black as a Part M compliance option
- Single piece moulded fittings
- Flat Tees and Flat Angles have integral bend radius control
- Dado version is available with antimicrobial BIO properties inherent to the PVC-U material
- Self extinguishing and non-flame propagating PVC-U
- Fire clips available to secure cables within trunking and prevent premature collapse in the event of a fire

Data information

- Compliant up to Cat 7a
- Standard bend radius 25mm
- Adjustable data box 32-40mm
- Steel screening divider available to BS EN 50714-2



Part M

For box assemblies and spacers that meet the requirements of Part M (DDA). See page 49.



Standard Colours

WH

WH: White



Sterling dado trunking assembly is manufactured using 55% recycled material



Sterling skirting trunking assembly is manufactured using 52% recycled material

Trunking profiles



Curve dado trunking assembly

code	size	pack
CEP1MWH	167 x 50mm	1 x 3m



Curve skirting trunking assembly

code	size	pack
CEP2MWH	167 x 50mm	1 x 3m

Basic components



Base unit

code	pack
ETB1M	4 x 3m

Please note the colour of the unseen base ETB1M may vary

ETB1M can be used as part of a Bio trunking system as base will be covered by lids.



Main compartment cover

code	colour	pack
ETL1WH	white	8 x 3m
ETL1BIOWH	white bio	8 x 3m
ETL1BK	black	8 x 3m



Curve cover

code	colour	pack
CETC1WH	white	8 x 3m
CETC1BIOWH	white bio	8 x 3m



Square cover

code	pack
ETSC1WH	8 x 3m

Dado fittings

**Coupler**

code	pack
CECP1MWH	2
CECP1MBIOWH	2

**End cap**

code	pack
CEEC1MWH	2
CEEC1MBIOWH	2

**Internal bend**

code	pack
CEIB1MWH	2
CEIB1MBIOWH	2

**Internal bend adjustable 85°-95°**

code	pack
CEIB1ABWH	1

NEW

**External bend**

code	pack
CEXP1MWH	2
CEXP1MBIOWH	2

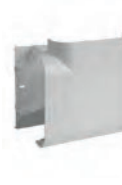
**External bend adjustable 85°-95°**

code	pack
CEXP1ABWH	1

NEW

**Flat angle cover (ABS)**

code	pack
CEFA1MWH	1

**Flat angle complete (ABS)**

code	pack
CEFA1MBWH	1
CEFA1MBBIOWH	1

**Flat tee cover (ABS)**

code	pack
CEFT1MWH	1

**Flat tee complete (ABS)**

code	pack
CEFT1MBWH	1
CEFT1MBBIOWH	1

Skirting fittings

**Coupler**

code	pack
CECP2MWH	2

**End cap**

code	pack
CEEC2MRHWH (right)	2
CEEC2MLHWH (left)	2

**Internal bend**

code	pack
CEIB2MWH	2

**External bend (ABS)**

code	pack
CEXP2MWH	2

**Flat angle up cover (ABS)**

code	pack
CEFA2UMWH	1

**Flat angle up complete (ABS)**

code	pack
CEFA2UMBWH	1

**Flat tee up cover (ABS)**

code	pack
CEFT2MWH	1

**Flat tee up complete (ABS)**

code	pack
CEFT2MBWH	1

Components

**Main crossover bridge**

code	pack
EMCB1	5

**Adaptor to conduit / mini trunking**

code	material	pack
CEAP1MWH	polycarbonate	1

NEW

Fire clips



Fire clip Sterling centre compartment

code	pack
FCSPC	50



Fire clip Sterling curve compartment

code	pack
FCSPAC	100



Fire clip Sterling square compartment

code	pack
FCSPS	100

Fire clip fixings



Masonry screws & washers

code	pack
FCMS	100



Cavity fixings & screws

code	pack
FCCS	50

We recommend using self tapping masonry or cavity screws and washers for all Fire clip installations in order to assist with meeting BS 7671 Wiring Regulations.

Screening



Steel screening divider

code	pack
ESF1	1 x 1.5m

Note: optional steel screening divider to assist in compliance with BS EN 50174-2



Steel screening divider bonding strap

code	pack
ESF2	5



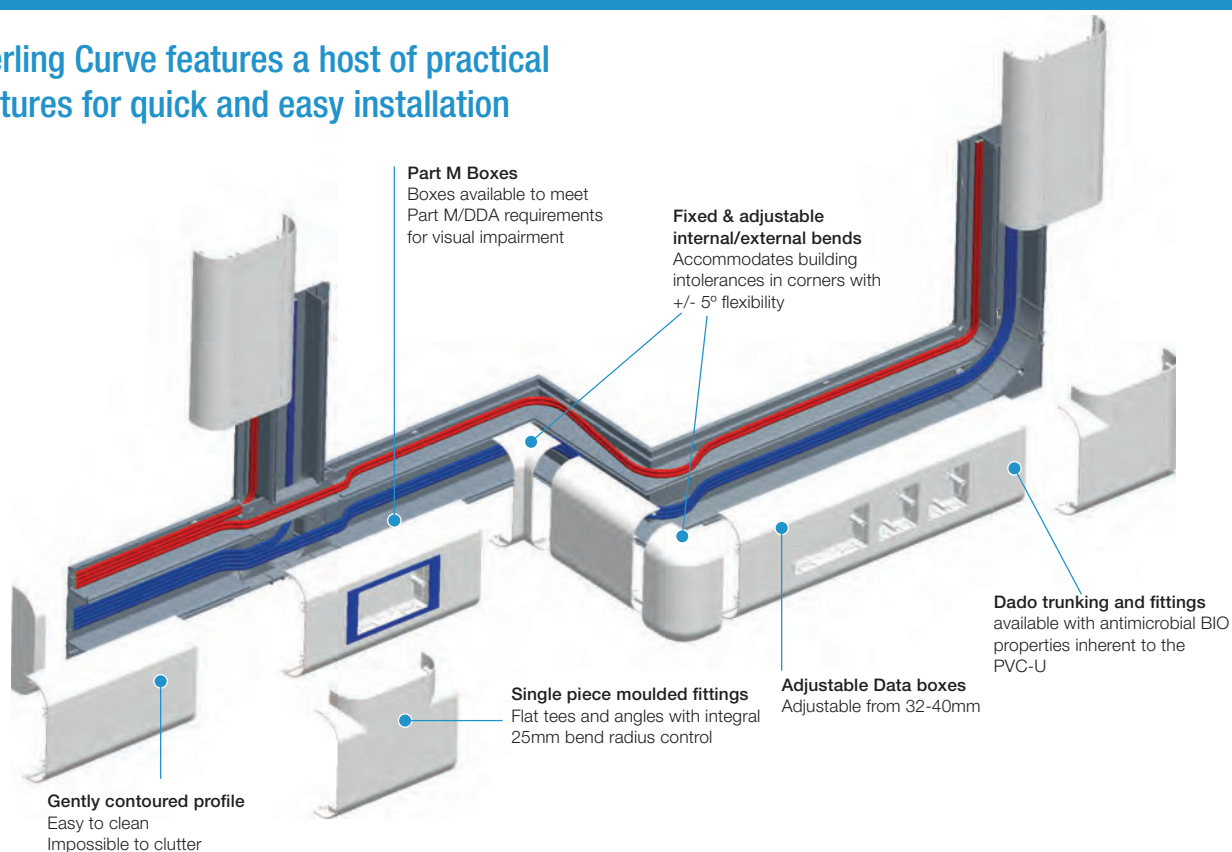
Bonding strap

code	pack
ESBS1	5

See page 49 for accessory boxes, spacers and plates.

Sterling Curve Trunking

Sterling Curve features a host of practical features for quick and easy installation



ACCESSORY BOXES, PLATES AND SPACERS

A range of white and coloured accessory boxes for installation into our trunking systems.

Product information

- Accept standard UK accessories
- Standard screw fixing centres
- Adjustable depth
- Coloured options in blue RAL 5002 and black RAL 9005
- Accessory boxes manufactured with antimicrobial properties for use with Sterling Curve Bio (ESSB1BIOWH and ESSB2BIOWH).

Approved Document M of the UK Building Regulations for Visual Impairment requires that face plates differ in colour from their background. Coloured accessory boxes provide a different colour frame to contrast against standard white accessories.



Boxes for UK accessories



*RCD/MCB Housing

code	pack
EAHCA1MWH	1

*Up to 4 modules can be accommodated

Note: RCDs are not supplied by Marshall-Tufflex



1 gang accessory box (30mm deep)

code	colour	pack
ESSB1WH	white	20
ESSB1BIOWH	white bio	20
ESSB1BK	black	20



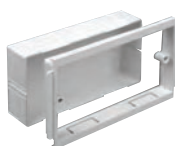
2 gang accessory box (30mm deep)

code	colour	pack
ESSB2WH	white	10
ESSB2BIOWH	white bio	10
ESSB2BK	black	10



1 gang adjustable depth box

code	depth	pack
EAB1WH	32 – 47mm	10



2 gang adjustable depth box

code	depth	pack
EAB2WH	32 – 47mm	5



Accessory box spacer

code	size	colour	pack
ES1WH	14mm	white	4

For use between accessory boxes



1 gang accessory plate

code	pack
ESSP1WH	2



2 gang accessory plate

code	pack
ESSP2WH	2

DDA / Part M boxes and spacers



1 gang accessory box (30mm deep)

code	colour	pack
ESPM1BU	blue	1
ESPM1BK	black	1



2 gang accessory box (30mm deep)

code	colour	pack
ESPM2BU	blue	1
ESPM2BK	black	1



Retrofit accessory box spacer

code	description	pack
ES3BU	blue	4
ES3BK	black	4



Accessory box spacer (14mm)

code	description	pack
ES1BK	black	4

For use between accessory boxes

Please note, these boxes are not suitable for use with Odyssey trunking. Boxes for Odyssey trunking are shown with the range on page 27.