

TWIN PLUS ALUMINIUM

Twin Plus aluminium is an extra deep cable management solution incorporating two large segregated high capacity compartments. Twin Plus is specifically designed for carrying large quantities of Cat 7a data cabling.

COMPLIANT UP TO
...CAT 7A...

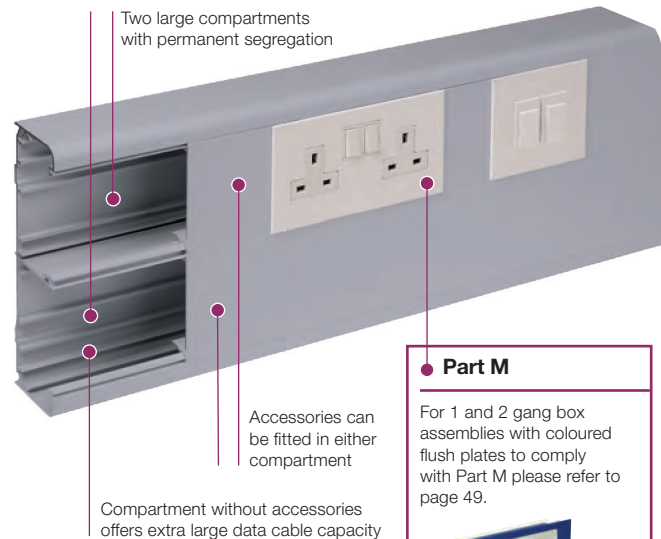
Product information

- 210 x 57mm
- 2 large permanent segregated compartments
- Suitable for dado and skirting applications
- Bends angles and tees with a large bend radius
- Includes a range of clip-on fittings with built-in overlaps
- All fittings are polycarbonate
- Aluminium systems specified with polycarbonate fittings meet accepted requirements for LSOH

Data information

- Compliant up to Cat 7a
- 50mm bend radius fittings
- Adjustable data box 32-47mm

Note: Allowance must be made for earthing the trunking system to comply with the current version of the BS 7671 Wiring Regulations.



Part M

For 1 and 2 gang box assemblies with coloured flush plates to comply with Part M please refer to page 49.



Standard Colours

SG

SG: Silver Grey



Base unit

code	pack
EMTA60SG	1 x 3m



Main compartment cover (aluminium)

code	pack
LTL1SG	1 x 3m



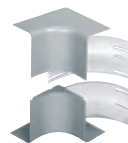
Coupler

code	pack
EC60SG	1



End cap

code	pack
EEC60SG	1



Internal bend assembly

code	pack
EIB60SG	1



External bend assembly - standard

code	pack
ESXB60SG	1

Capacity reduced by 50%



Flat angle assembly

code	pack
EFA60SG	1

Covers and cable inserts in Polycarbonate



Flat tee assembly

code	pack
EFTA60SG	1

Flat tees include covers, cable inserts in Polycarbonate with base in aluminium

End cap retaining screws

When installing end caps, additional retention can be achieved by using end cap retaining screws G1310 (pack 40).

For components and boxes see page 81

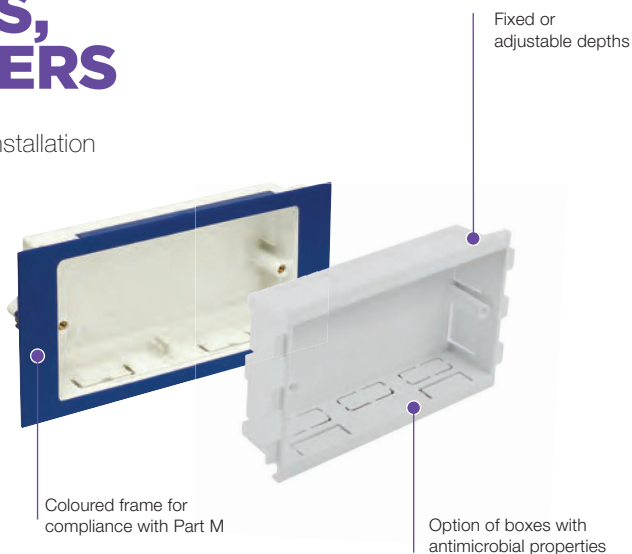
ACCESSORY BOXES, PLATES AND SPACERS

A range of white and coloured accessory boxes for installation into our trunking systems.

Product information

- Accept standard UK accessories
- Standard screw fixing centres
- Adjustable depth
- Coloured options in blue RAL 5002 and black RAL 9005
- Accessory boxes manufactured with antimicrobial properties for use with Sterling Curve Bio (ESSB1BIOWH and ESSB2BIOWH).

Approved Document M of the UK Building Regulations for Visual Impairment requires that face plates differ in colour from their background. Coloured accessory boxes provide a different colour frame to contrast against standard white accessories.



Boxes for UK accessories



*RCD/MCB Housing

code	pack
EAHCA1MWH	1

*Up to 4 modules can be accommodated

Note: RCDs are not supplied by Marshall-Tufflex



1 gang accessory box (30mm deep)

code	colour	pack
ESSB1WH	white	20
ESSB1BIOWH	white bio	20
ESSB1BK	black	20



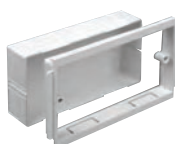
2 gang accessory box (30mm deep)

code	colour	pack
ESSB2WH	white	10
ESSB2BIOWH	white bio	10
ESSB2BK	black	10



1 gang adjustable depth box

code	depth	pack
EAB1WH	32 – 47mm	10



2 gang adjustable depth box

code	depth	pack
EAB2WH	32 – 47mm	5



Accessory box spacer

code	size	colour	pack
ES1WH	14mm	white	4

For use between accessory boxes



1 gang accessory plate

code	pack
ESSP1WH	2



2 gang accessory plate

code	pack
ESSP2WH	2

DDA / Part M boxes and spacers



1 gang accessory box (30mm deep)

code	colour	pack
ESPM1BU	blue	1
ESPM1BK	black	1



2 gang accessory box (30mm deep)

code	colour	pack
ESPM2BU	blue	1
ESPM2BK	black	1



Retrofit accessory box spacer

code	description	pack
ES3BU	blue	4
ES3BK	black	4



Accessory box spacer (14mm)

code	description	pack
ES1BK	black	4

For use between accessory boxes

Please note, these boxes are not suitable for use with Odyssey trunking. Boxes for Odyssey trunking are shown with the range on page 27.

Components

**Earth bonding kit**

code	description	pack
LBT3		1

**Coupler pin**

code	description	pack
LDP1	ø2.0 x 20mm	10

To aid alignment of base profiles

**Bonding strap**

code	description	pack
LBS1	base to base 32 amp	5

**Bonding strap**

code	description	pack
LBS2	cover to base	5

**Bonding strap**

code	description	pack
LBS5	end cap to base	1

**End cap bonding strap**

code	description	pack
LBS3		1

**RCD/MCB housing**

code	description	pack
EAHCA1MWH	polycarbonate	1

Not available in silver grey.

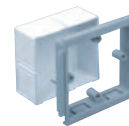
*Up to 4 modules can be accommodated.

Note: RCDs and MCBs are not supplied by Marshall-Tufflex**1 gang accessory box
30mm deep**

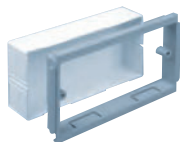
code	description	pack
ESSB1SG		1
ESSBA1WH		1

**2 gang accessory box
30mm deep**

code	description	pack
ESSB2SG		1
ESSBA2WH		1

**1 gang adjustable
depth box**

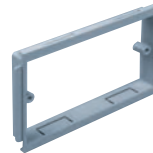
code	depth	pack
EAB1SG	32-47mm	1

**2 gang adjustable
depth box**

code	depth	pack
EAB2SG	32-47mm	1

**1 gang accessory
plate**

code	description	pack
ESSP1SG		2

**2 gang accessory
plate**

code	description	pack
ESSP2SG		2

Boxes and plates (polycarbonate)