

TWIN PLUS TRUNKING

Twin Plus is a large, segregated, two-compartment skirting and dado trunking system that provides high capacity cable containment for most commercial environments.

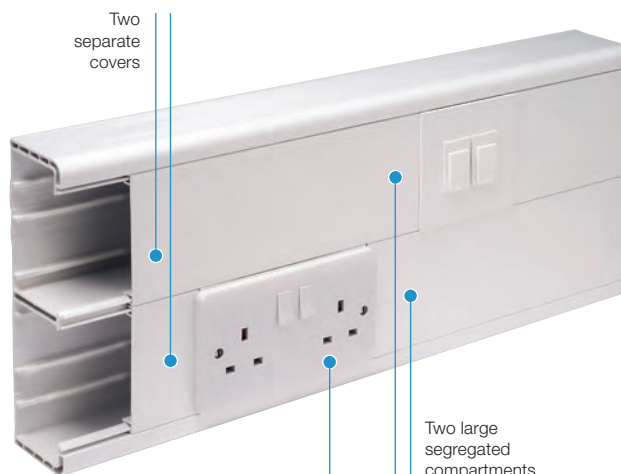
Product information

- 210 x 57mm
- 2 large segregated compartments
- Can be subdivided
- Separate cover access to each compartment
- Suitable for skirting and dado application
- Self extinguishing and non-flame propagating PVC-U
- Fire clips available to secure cables within trunking and prevent premature collapse in the event of a fire
- ETL1 lid is available in black as a Part M compliance option

Data information

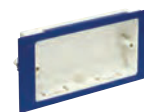
- Compliant up to Cat 7a
- 50mm bend radius fittings
- Adjustable data box 32-47mm
- Steel screening divider available to BS EN 50714-2

Standard Colour
WH
WH: White



Part M

Box assemblies and spacers that meet the requirements of Part M (DDA). See page 49

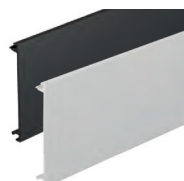


Basic components



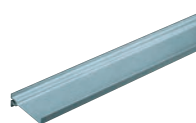
Base unit

code	pack
EMT60WH	2 x 3m



Cover

code	pack
ETL1WH	8 x 3m
ETL1BK	8 x 3m



Dividing fillet – PVC-U

code	pack
EDF1	8 x 3m

Fittings (ABS)



Coupler

code	pack
EC60WH	1



End cap

code	pack
EEC60WH	1



For additional retention use end cap retaining screws G1310 (Pack 40)



External bend assembly – large

code	pack
EXB60WH	1



Internal bend assembly

code	pack
EIB60WH	1



External bend assembly – standard

code	pack
ESXB60WH	1

Capacity reduced by 50%



Flat angle assembly

code	pack
EFA60WH	1



Flat tee assembly

code	pack
EFT60WH	1

Firefly clips

**Fire clip Twin Plus**

code	pack
FCTP	50

Fire clip fixings

**Masonry screws & washers**

code	pack
FCMS	100

**Cavity fixings & screws**

code	pack
FCCS	50

We recommend using self tapping masonry or cavity screws and washers for all Fire clip installations in order to assist with meeting BS 7671 Wiring Regulations.

Screening

**Steel screening divider**

code	pack
ESF60	1 x 1.5m

Note: optional steel screening divider to assist in compliance with BS EN 50174-2

**Steel screening divider bonding strap**

code	pack
ESF2	5

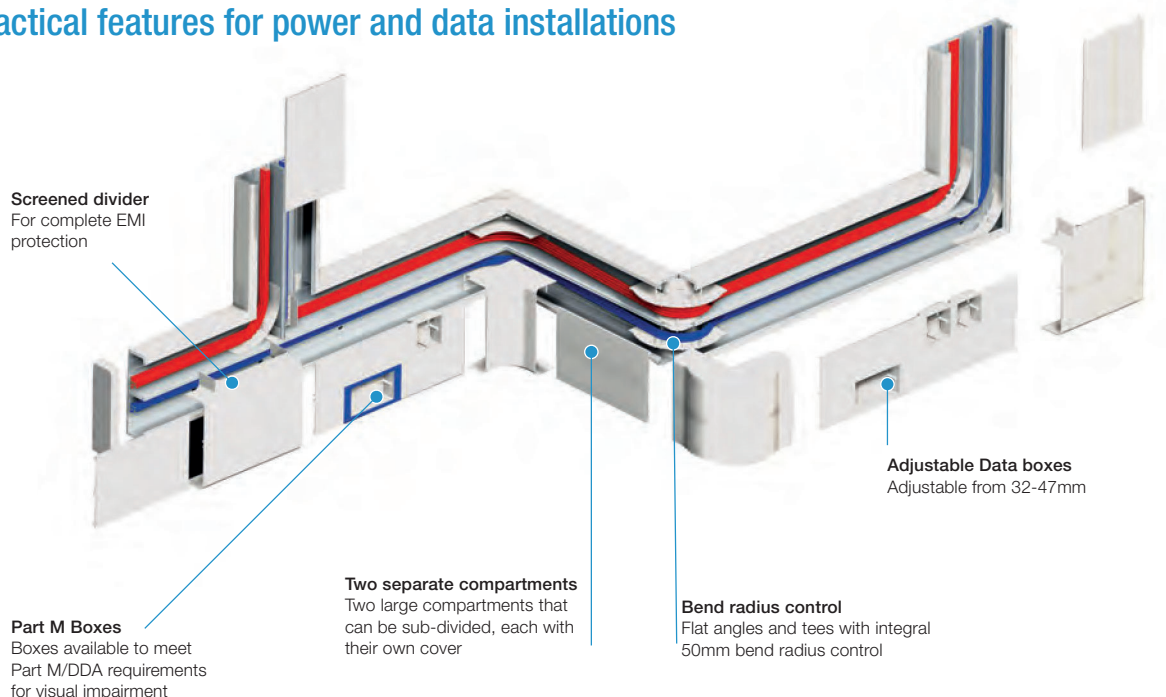
**Bonding strap**

code	pack
ESBS1	5

See page 49 for accessory boxes, spacers and plates.

Twin Plus

Twin Plus is a high cable capacity trunking system with a variety of practical features for power and data installations



ACCESSORY BOXES, PLATES AND SPACERS

A range of white and coloured accessory boxes for installation into our trunking systems.

Product information

- Accept standard UK accessories
- Standard screw fixing centres
- Adjustable depth
- Coloured options in blue RAL 5002 and black RAL 9005
- Accessory boxes manufactured with antimicrobial properties for use with Sterling Curve Bio (ESSB1BIOWH and ESSB2BIOWH).

Approved Document M of the UK Building Regulations for Visual Impairment requires that face plates differ in colour from their background. Coloured accessory boxes provide a different colour frame to contrast against standard white accessories.



Boxes for UK accessories



*RCD/MCB Housing

code	pack
EAHCA1MWH	1

*Up to 4 modules can be accommodated

Note: RCDs are not supplied by Marshall-Tufflex



1 gang accessory box (30mm deep)

code	colour	pack
ESSB1WH	white	20
ESSB1BIOWH	white bio	20
ESSB1BK	black	20



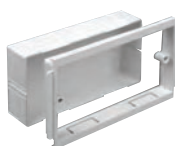
2 gang accessory box (30mm deep)

code	colour	pack
ESSB2WH	white	10
ESSB2BIOWH	white bio	10
ESSB2BK	black	10



1 gang adjustable depth box

code	depth	pack
EAB1WH	32 – 47mm	10



2 gang adjustable depth box

code	depth	pack
EAB2WH	32 – 47mm	5



Accessory box spacer

code	size	colour	pack
ES1WH	14mm	white	4

For use between accessory boxes



1 gang accessory plate

code	pack
ESSP1WH	2



2 gang accessory plate

code	pack
ESSP2WH	2

DDA / Part M boxes and spacers



1 gang accessory box (30mm deep)

code	colour	pack
ESPM1BU	blue	1
ESPM1BK	black	1



2 gang accessory box (30mm deep)

code	colour	pack
ESPM2BU	blue	1
ESPM2BK	black	1



Retrofit accessory box spacer

code	description	pack
ES3BU	blue	4
ES3BK	black	4



Accessory box spacer (14mm)

code	description	pack
ES1BK	black	4

For use between accessory boxes

Please note, these boxes are not suitable for use with Odyssey trunking. Boxes for Odyssey trunking are shown with the range on page 27.