

XL ALUMINIUM

XL aluminium is a deep, three compartment system that provides extra capacity and screening performance levels for data cabling.

COMPLIANT UP TO
...CAT 7A...

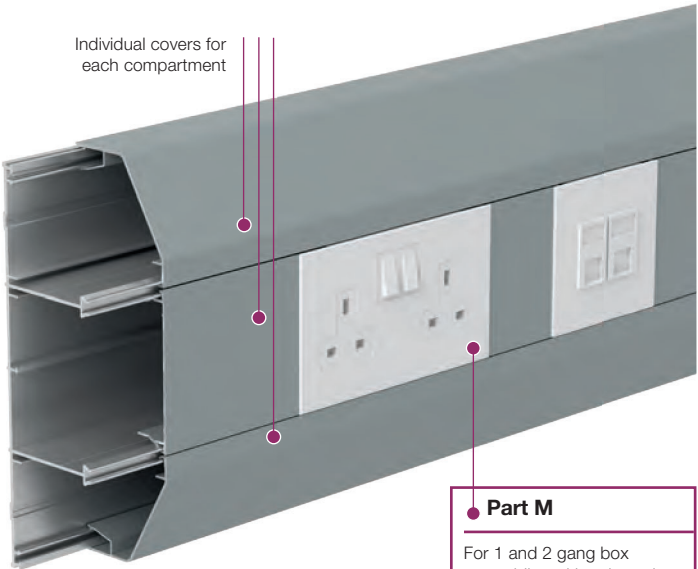
Product information

- 220 x 65mm
- Three deep segregated compartments
- Compartments can be subdivided
- Suitable for dado and skirting applications
Includes a range of polycarbonate clip-on fittings with built-in overlaps
- Aluminium systems specified with polycarbonate fittings meet accepted requirements for LSOH

Data information

- Compliant up to Cat 7a
- External bends feature internal segregators
- Adjustable data box 32mm - 47mm
- Screened divider

Note: Allowance must be made for earthing the trunking system to comply with the current version of the BS 7671 Wiring Regulations.



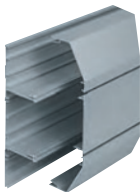
Part M

For 1 and 2 gang box assemblies with coloured flush plates to comply with Part M please refer to page 49.

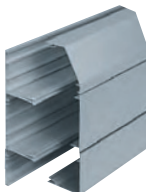


Standard Colour
SG
SG: Silver Grey

Trunking profiles



XL dado
size 220 x 65mm



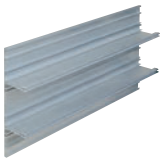
XL skirting
size 220 x 65mm



Dividing fillet (PVC-U)
code pack
ELDF200 8 x 3m

For components and boxes see page 81

Basic components



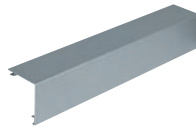
Basic unit
code pack
ELTB300 2 x 3m



Main compartment cover
code pack
LTL1SG 1 x 3m



Angled cover
code pack
ELAC300SG 1 x 3m



Square cover
code pack
ELSC300SG 1 x 3m

ALUMINIUM TRUNKING SYSTEMS

XL dado fittings

**Coupler**

code	description	pack
EC301SG	polycarbonate	1

**End cap**

code	description	pack
EEC301SG	polycarbonate	1

**Internal bend**

code	description	pack
EIB301SG	polycarbonate	1

**External bend**

code	description	pack
EXB301SG	polycarbonate	1

**Flat angle – up/down**

code	description	pack
EFA301SG	aluminium	1

**Flat tee – up/down**

code	description	pack
EFT301SG	aluminium	1

XL skirting fittings

**Coupler**

code	description	pack
EC302SG	polycarbonate	1

**End cap**

code	description	pack
EEC302LHSG	polycarbonate	1
EEC302RHSG	polycarbonate	1

LH = Left hand RH = Right hand

**Internal bend**

code	description	pack
EIB302SG	polycarbonate	1

**External bend**

code	description	pack
EXB302SG	polycarbonate	1

**Flat angle – upward**

code	description	pack
EFA302USG	aluminium	1

**Flat angle – downward**

code	description	pack
EFA302DSG	aluminium	1

XL skirting flat tees

Where profiles have one angled cover and one square cover, as with XL skirting, it is possible to create a tee by changing the top or bottom cover so that covers match the profile of the trunking. For example:

- Upward tee – select XL dado tee remove the angled bottom cover and replace with square cover.

**Earth bonding kit**

code	description	pack
LBT3		1

**Coupler pin**

code	description	pack
LDP1	ø2.0 x 20mm	10

To aid alignment of base profiles

**Bonding strap**

code	description	pack
LBS1	base to base 32 amp	5

**Bonding strap**

code	description	pack
LBS2	cover to base	5

**Bonding strap**

code	description	pack
LBS5	end cap to base	1

**End cap bonding strap**

code	description	pack
LBS3		1

**RCD/MCB housing**

code	description	pack
EAHCA1MWH	polycarbonate	1

Not available in silver grey.

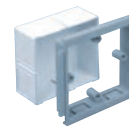
*Up to 4 modules can be accommodated.

Note: RCDs and MCBs are not supplied by Marshall-Tufflex**1 gang accessory box
30mm deep**

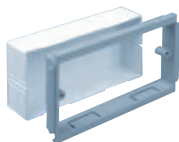
code	description	pack
ESSB1SG		1
ESSBA1WH		1

**2 gang accessory box
30mm deep**

code	description	pack
ESSB2SG		1
ESSBA2WH		1

**1 gang adjustable
depth box**

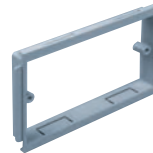
code	depth	pack
EAB1SG	32-47mm	1

**2 gang adjustable
depth box**

code	depth	pack
EAB2SG	32-47mm	1

**1 gang accessory
plate**

code	description	pack
ESSP1SG		2

**2 gang accessory
plate**

code	description	pack
ESSP2SG		2

ACCESSORY BOXES, PLATES AND SPACERS

A range of white and coloured accessory boxes for installation into our trunking systems.

Product information

- Accept standard UK accessories
- Standard screw fixing centres
- Adjustable depth
- Coloured options in blue RAL 5002 and black RAL 9005
- Accessory boxes manufactured with antimicrobial properties for use with Sterling Curve Bio (ESSB1BIOWH and ESSB2BIOWH).

Approved Document M of the UK Building Regulations for Visual Impairment requires that face plates differ in colour from their background. Coloured accessory boxes provide a different colour frame to contrast against standard white accessories.



Boxes for UK accessories



*RCD/MCB Housing

code	pack
EAHCA1MWH	1

*Up to 4 modules can be accommodated

Note: RCDs are not supplied by Marshall-Tufflex



1 gang accessory box (30mm deep)

code	colour	pack
ESSB1WH	white	20
ESSB1BIOWH	white bio	20
ESSB1BK	black	20



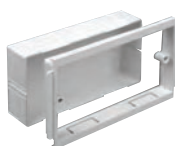
2 gang accessory box (30mm deep)

code	colour	pack
ESSB2WH	white	10
ESSB2BIOWH	white bio	10
ESSB2BK	black	10



1 gang adjustable depth box

code	depth	pack
EAB1WH	32 – 47mm	10



2 gang adjustable depth box

code	depth	pack
EAB2WH	32 – 47mm	5



Accessory box spacer

code	size	colour	pack
ES1WH	14mm	white	4

For use between accessory boxes



1 gang accessory plate

code	pack
ESSP1WH	2



2 gang accessory plate

code	pack
ESSP2WH	2

DDA / Part M boxes and spacers



1 gang accessory box (30mm deep)

code	colour	pack
ESPM1BU	blue	1
ESPM1BK	black	1



2 gang accessory box (30mm deep)

code	colour	pack
ESPM2BU	blue	1
ESPM2BK	black	1



Retrofit accessory box spacer

code	description	pack
ES3BU	blue	4
ES3BK	black	4



Accessory box spacer (14mm)

code	description	pack
ES1BK	black	4

For use between accessory boxes

Please note, these boxes are not suitable for use with Odyssey trunking. Boxes for Odyssey trunking are shown with the range on page 27.