

MARSHALL TUFFLEX

MORE THAN PVC-U CABLE MANAGEMENT SOLUTIONS

DELIVERING INNOVATION
www.marshall-tufflex.com

UK OWNED
UK MANUFACTURER



CABLE MANAGEMENT SPECIALISTS

MARSHALL-TUFFLEX IS THE UK'S LEADING MANUFACTURER AND SUPPLIER OF CABLE MANAGEMENT SOLUTIONS FOR COMMERCIAL, INDUSTRIAL, HEALTHCARE AND EDUCATION MARKETS.

You undoubtedly know us for our market leading PVC-U conduit, mini, maxi and perimeter trunking solutions, but did you know we do much more than just PVC-U?

We supply cable management solutions in many different materials suitable for a wide range of applications.

MUCH MORE THAN JUST PVC-U



STEEL TRUNKING

Steel has a mechanical strength that makes it a robust and durable option for public areas where there is a high footfall.

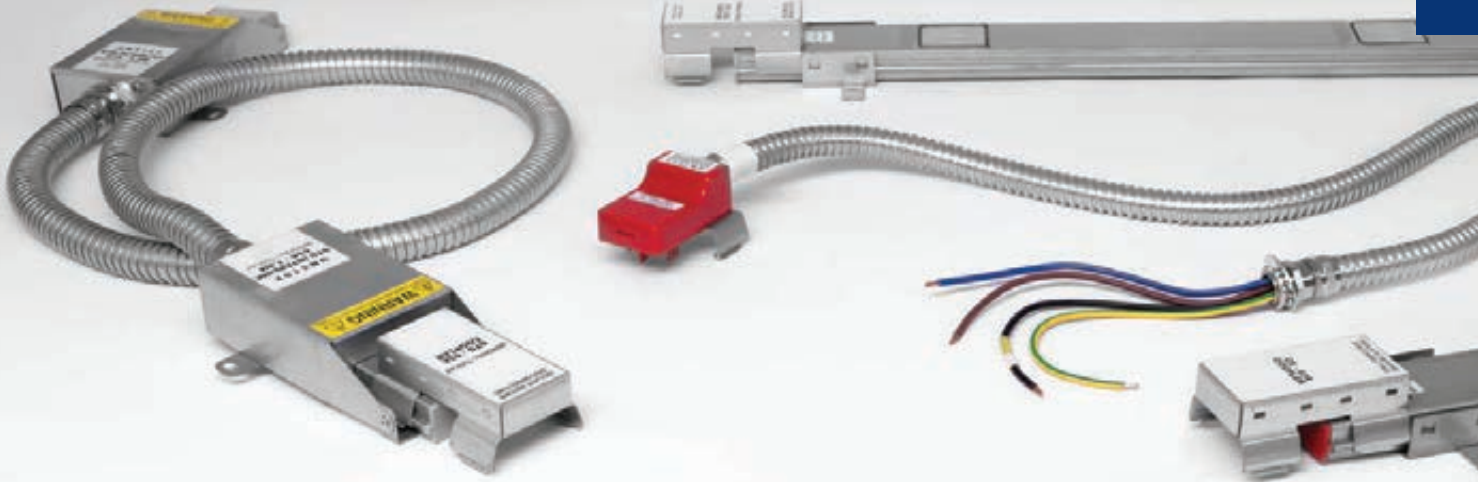
Our Steel trunking systems incorporate clean lines with a functionality that provides greater mechanical strength combined with first class fire performance and excellent screening capability.

ALUMINIUM TRUNKING

Aluminium cable containment is an excellent choice of material for office areas that need a stylish but mechanically robust trunking and for industrial, workshop and laboratory installations, particularly where a high quality of screening performance is required.

Many of our popular trunking solutions are available in aluminium from Bench trunking to three compartment perimeter trunking.





UNDERFLOOR TO DESK

A comprehensive product range of versatile floor to desk cable management and prefabricated wiring systems developed to provide installations that are fast, easy and adaptable.

Our underfloor to desk solutions incorporate a range of products for the distribution of power and data services from beneath raised floors and in-screed systems to desks.

- Powertrack
- Raised floor boxes
- In-screed floor systems
- Accessory plates
- Power and data modules
- Desktop modules



WIRE BASKET

A comprehensive range of wire basket solutions for the simple routing of power and data cables

Strong and simple to install, Wire Basket offers maximum cable ventilation and a high level of resistance to cable movement.

Connection between sections of wire basket is quick and easy thanks to the integral couplers which results in reduced installation times and labour savings.

We also offer Wire Basket Cablelay, which is laid within lengths of wire basket or tray to protect cables from protrusions, sharp edges, rough surfaces and kinking ridges thus maintaining the integrity of the data cables which lay on top.

PVC CABLE TRAY

PVC Cable Tray is a non-conductive, non-corrosive, lightweight and impact resistant cable management solution for the simple support of power and data cables in outdoor environments.

LIGHTWEIGHT AND EASY TO INSTALL, PVC CABLE TRAY IS AVAILABLE IN FIVE DIFFERENT SIZES FROM 100 TO 400MM WIDE.



FAST FIX METAL CABLE TRAY

Sections of metal tray simply interconnect and bolt together for quick and easy installation, saving time and eliminating the need for separate couplers.

METAL CABLE TRAY IS AVAILABLE IN LIGHT, MEDIUM AND HEAVY-DUTY PROFILES AND HAS A PRE-GALVANISED FINISH.



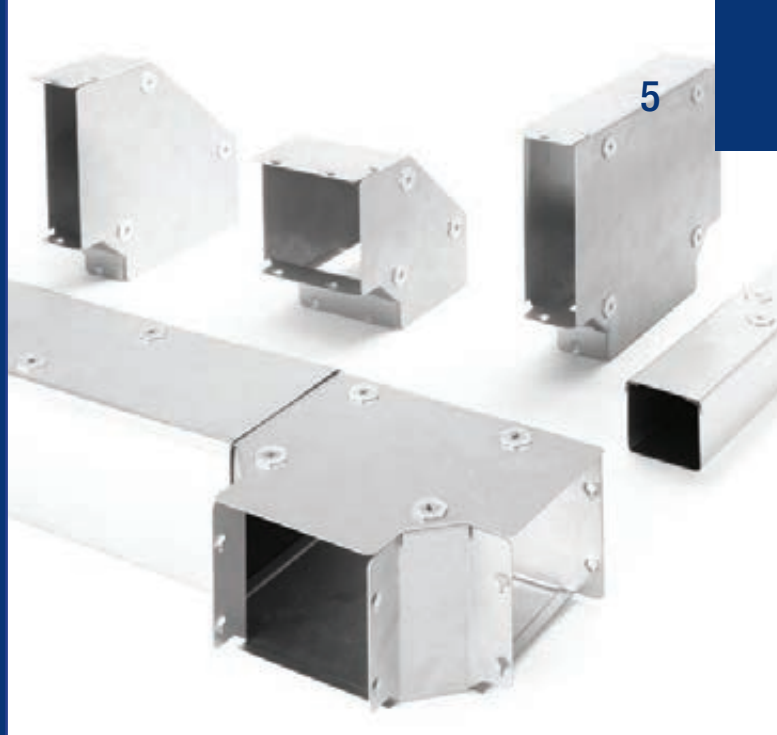
In addition to the stocked Basor products, Marshall-Tufflex can also supply any other products from this range.

3EBasor
CABLE TRAY SPECIALIST

METAL TRUNKING

Metal trunking is rated to IP4X and features a simple hexagonal turnbuckle fixing system.

Available in a huge variety of sizes and with options for single, two or three compartment versions. Lighting trunking is also available to support, distribute and organise cables within lighting circuits.

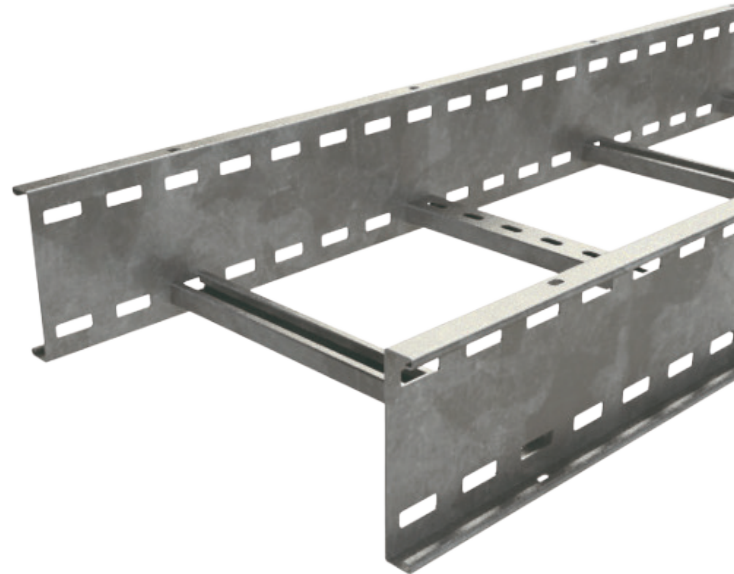


METAL STRUT

Slotted and plain metal strut to provide a versatile framework and bracket support solution within industrial settings. Ideal for use when installing metal cable tray or wire basket, or to create an independent framework, the system is easy to assemble, re-configure or modify.

METAL CABLE LADDER

Metal ladder tray is the ideal solution for routing heavy cables in large areas that have wide spacing between supports, as is often the case in power plants, airports and heavy industry environments.



MT SUPERTUBE

MT Supertube is a unique, LSOH, 3-layer heavy gauge conduit comprising polyethylene internal and external layers over a continuous aluminium tube that provides additional mechanical strength.

MT Supertube has excellent EMI screening performance and is a practical and cost-saving alternative to standard galvanised conduits.



**A TIME SAVING
ALTERNATIVE
TO GALVANISED
STEEL CONDUIT**

GRP LADDER AND TRAY

GRP ladder and tray support systems provide robust yet lightweight cable management for industrial and commercial applications.

GRP cable management systems are well suited to aggressive environments where there might be extreme weather or high temperatures. They are extremely robust, considerably lighter than aluminium or steel, and have excellent resistance against fire and corrosion resulting in a very long-life span. GRP systems have a large cable capacity, and offer fast and flexible installation solutions, with the ability of on-site assembly and configuration.

We offer a wide range of GRP systems including trays, ladders, ground ducts, troughing, accessories and fittings, fixings and supports.



**ROBUST YET
LIGHTWEIGHT CABLE
MANAGEMENT
FOR EXTREME
ENVIRONMENTS**

POWERPOLES AND POWERPOSTS

PowerPoles and PowerPosts are a practical and elegant solution for the management of power, data and communication services to island workstations.

We offer single and double sided square PowerPoles suitable for suspended and solid ceiling applications. Our double sided square PowerPost is suitable for all floor applications, and is designed to fit below standard desk height.



FIREFLY

To comply with the latest regulations, Marshall-Tufflex supply a range of Firefly fire clips to secure cables within or outside of our trunking and conduit systems. The clips are designed to secure and support cables to prevent premature collapse in the event of a fire.

Firefly is available for our conduit, mini, maxi and perimeter trunking systems.



SAVING LIVES IN THE EVENT OF A FIRE

ANTIMICROBIAL TRUNKING SOLUTIONS

Where hygiene is a priority, we have a solution with integral antimicrobial properties that can be incorporated within the PVC-U perimeter trunking and deliver ongoing antimicrobial protection that prevents 99.9% of harmful bacteria.

Because the Marshall-Tufflex Bio trunking solution is integral to the PVC-U material, there is no reduction in effectiveness of the trunking throughout its life – even if it is scratched or damaged.

We hold stock of Odyssey and Sterling Curve dado with Bio antimicrobial protection.



Marshall-Tufflex Ltd

55-65 Castleham Road
St Leonards on Sea
TN38 9NU
United Kingdom

T +44 (0)1424 856600
E sales@marshall-tufflex.com
www.marshall-tufflex.com

Technical Hotline:
+44 (0)1424 856688



Collect your order from our branches:

Manchester (M26 1GG)
Watford (WD18 0EZ)
Hastings (TN38 9NU)

Republic of Ireland distributor

Core Distribution Ireland
17b Goldenbridge Industrial Estate
Tyrconnell Road, Inchicore
Dublin 8, D08 WD50

T +353 (0)1453 7033
E sales@coreelectrical.ie

Northern Ireland distributor

Core Distribution Northern Ireland
Unit 4 Duncrue Industrial Park
Duncrue Road
Belfast, BT3 9BP

T +44 (0)28 900 200 66
E info@coreelectrical.com

In pursuance of our policy of continued product improvement Marshall-Tufflex reserve the right to change the design or specification of its products without notification.

**UK OWNED
UK MANUFACTURER**

