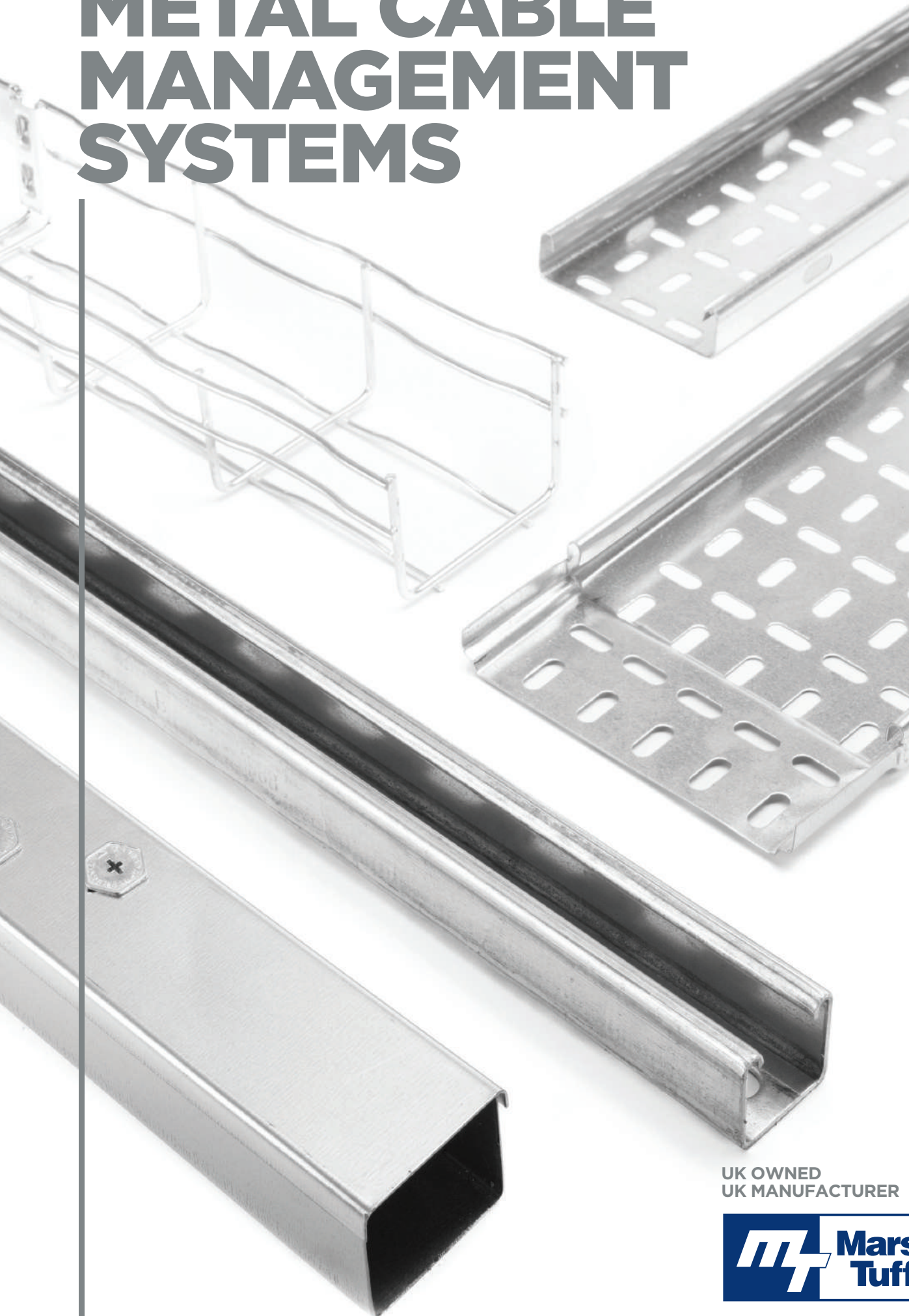


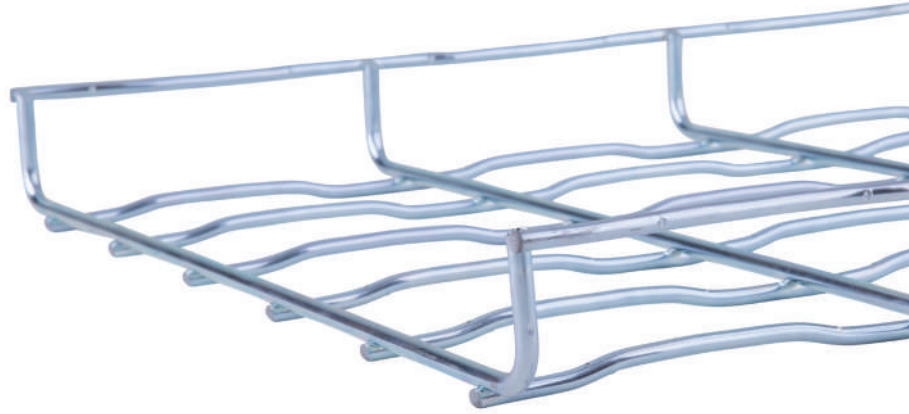
METAL CABLE MANAGEMENT SYSTEMS



DELIVERING INNOVATION
www.marshall-tufflex.com

UK OWNED
UK MANUFACTURER





CABLE MANAGEMENT SPECIALISTS



Marshall-Tufflex is the UK's leading manufacturer and supplier of cable management solutions for commercial, industrial, healthcare, education and domestic markets.

Based in Hastings, East Sussex the company was established in 1942 and is recognised throughout the industry for quality, consistency, reliability, value for money and innovation.

We are extremely proud of our heritage as a family owned company and our priority for the future is to re-invest and continue producing new and effective solutions for the building industry.



ALL YOUR CABLE MANAGEMENT NEEDS IN ONE PLACE

Now offering a full range of metal cable management solutions as well as PVC-U and GRP, we are ideally placed as a one stop shop for absolutely all your cable management needs.

Our metal cable management solutions include wire basket and metal cable tray in addition to our comprehensive new ranges of metal trunking, strut and ladder.

NO 1

FOR CABLE MANAGEMENT

INTRODUCTION

4 | Introduction

First class customer service

Our Area Sales Managers, Specification Managers and technical specialists work closely with consultants, contractors and clients in order to provide the best possible technical and sales support.

Our Customer Service Team are on hand to advise on stock availability, lead times, delivery schedules and order fulfilment.

Our office opening hours are 8:30am to 5:00pm Monday to Friday.



Buying Marshall-Tufflex products

Marshall-Tufflex products are available throughout the UK via a large network of national and independent electrical wholesalers.



Collection service*

Our popular collection service gives our UK customers an unrivalled two-hour turnaround on product orders, allowing collection from our dedicated collection point in Manchester. Orders can also be collected next day from our Watford and Hastings depots.



Manchester: Europa Trading Estate, *Monday – Friday 8am – 5.30pm*
Stoneclough Road, Radcliffe,
Manchester M26 1GG

Watford: Unit 4 Trade City, *Monday – Friday 8am – 2pm*
Thomas Sawyer Way,
Watford WD18 0EZ

Hastings: 55-65 Castleham Road, *Monday – Friday 8am – 5.30pm*
Hastings TN38 9NU

- Orders can be collected two hours after order placement from Manchester.
- Orders for collection from Watford or Hastings, placed by 12.30pm will be available for collection from 8am the following day.

* Subject to stock availability

Standard Stock Orders

Orders can be placed online or by email with our Customer Services Team. Goods will be delivered on your next scheduled delivery day, subject to availability, providing your order is received before the daily cut-off time of 12.30pm.



Send your order to us at:

✉ sales@marshall-tufflex.com

Direct to site deliveries

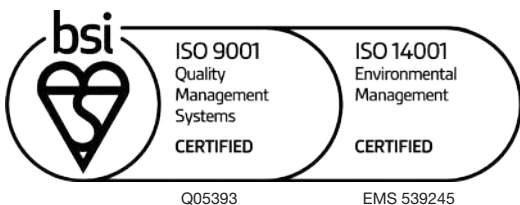
If you need your order delivered directly to site, our Customer Service Team will be happy to arrange this for you.

Carriage charges apply if minimum order value is not met.

Standards

BSI Standards

Marshall-Tufflex is committed to excellence and is recognised by the BSI as a firm of Assessed Capability for Quality Management Systems to BS EN ISO 9001:2015 and Environmental Management Systems to BS EN ISO 14001:2015.



METAL CABLE MANAGEMENT SYSTEMS

Marshall-Tufflex offer a full range of metal cable management solutions designed with ease of fitting and speed of installation in mind.

Metal Trunking

Marshall-Tufflex metal trunking is rated to IP4X and features a simple hexagonal turnbuckle fixing system. Available in a huge variety of sizes and with options for single, two or three compartment versions. Lighting trunking is also available to support, distribute and organise cables within lighting circuits.



Page
6

Metal Strut

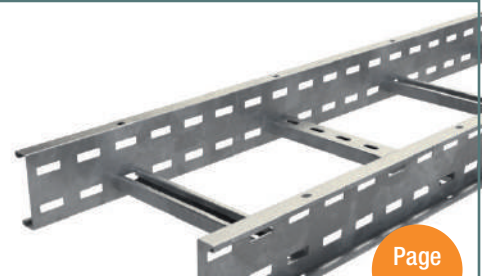
Slotted and plain metal strut to provide a versatile framework and bracket support solution within industrial settings. Ideal for use when installing metal cable tray or wire basket, or to create an independent framework, the system is easy to assemble, re-configure or modify.



Page
12

Metal Cable Ladder

Basor metal ladder tray is the ideal solution for routing heavy cables in large areas that have wide spacing between supports, as is often the case in power plants, airports and heavy industry environments.



Page
16

Wire Basket

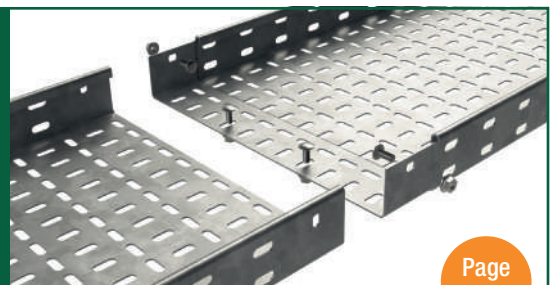
The Basor fast-coupling wire basket system allows sections of wire basket to be simply joined together for super-fast installation using integral couplers. The unique rippled wire design enhances the product strength and resists flexing.



Page
18

Metal Cable Tray

Basor metal cable tray is ideal for the support of power and data cables in commercial and industrial installations. Sections of metal tray are simply interconnected together for quick and easy installation, saving time and eliminating the need for separate couplers.



Page
24

METAL TRUNKING



Metal trunking offers robust protection for cabling in various industrial and commercial applications. Rated to IP4X and designed with installers in mind, the system features a user-friendly hexagonal turnbuckle fixings for quick and easy installation.

Available in a huge variety of sizes, multi-compartment versions are part of the standard range.

Lighting trunking is also available to support, distribute and organise cables within lighting circuits.

- Supplied in 3 metre lengths
- A wide selection of sizes between 50x50 to 300x300mm
- Lids secured via hexagonal turnbuckles with screw locators for quick and easy installation
- Removable lids for easy modification and to provide cable access via the top or side
- IP4X rated
- Single, two or three compartment options
- Lighting trunking to support, distribute and organise cable for lighting circuits
- Lid fixings and couplers are included as standard



Material and finish

Pre-galvanised finish.

| |
|------------------------|
| Standard finish |
| PG |
| PG: Pre-galvanised |

Manufactured from continuously hot dipped zinc coated low carbon steel strip to BS EN 10346.

Product features



IP4X Rating

The IP4X rating indicates that the trunking is highly resistant to the ingress of solid objects, including dust and particles with a diameter greater than 1mm.

Turnbuckle Fixing

The unique hexagonal turnbuckle fixing system offers quick and easy installation for contractors installing the system, with six turnbuckles per three metre length.

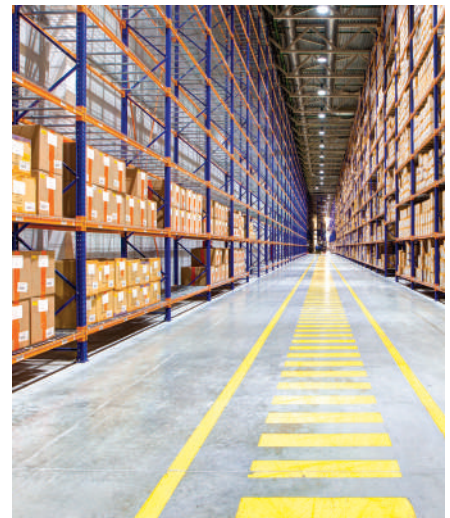
Multi-compartment versions

Turnbuckle trunking can be supplied with welded dividers providing two or three compartment options – all as part of our standard range.



Applications

Metal trunking can be used in a variety of settings, including manufacturing plants, warehouses, laboratories and other industrial facilities.



Trunking



3m - Single compartment



3m - two compartments

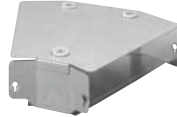


3m - three compartments

Fittings



90° gusset bend top lid



45° gusset bend top lid



90° gusset bend inside lid



45° gusset bend inside lid



90° gusset bend outside lid



45° gusset bend outside lid



Gusset tee top lid



Gusset tee inside lid



Gusset tee outside lid



End cap



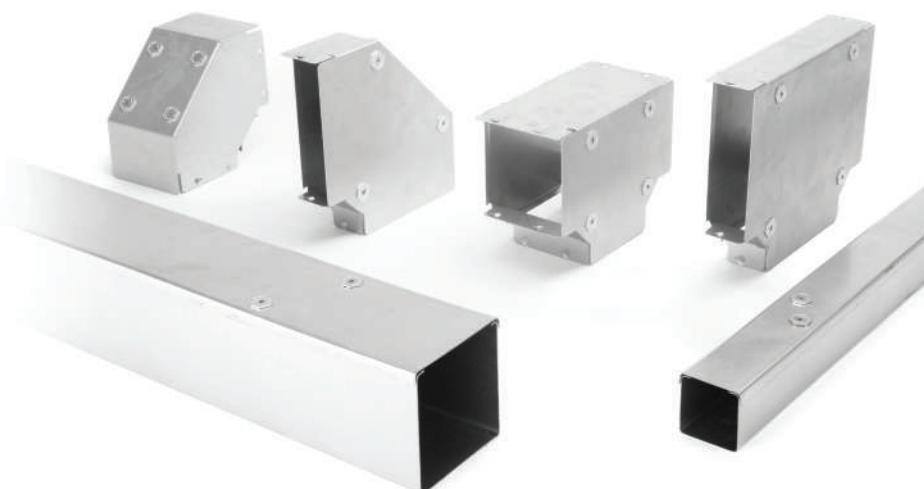
Trunking hanger



U shaped coupler

Marshall-Tufflex metal trunking is available in the following sizes as standard:

| | Width x depth |
|--------------|--------------------------------------|
| 50mm width: | 50 x 50mm |
| 75mm width: | 75 x 75mm |
| 100mm width: | 100 x 50mm, 100 x 100mm |
| 150mm width: | 150 x 50mm, 150 x 100mm, 150 x 150mm |



Approvals 

- Low Voltage Directive 2014/35/EU
- The Electrical Equipment (Safety) Regulations 2016 BS 7671:2018
- BS EN 50085-1:2005+A1:2013
- BS EN 50085-2-1:2006+A1:2011

METAL TRUNKING



| Size w x d | No. of Compartments | Trunking 3m | 90° gusset bend top lid | 45° gusset bend top lid | 90° gusset bend inside lid | 45° gusset bend inside lid |
|------------|---------------------|-------------|-------------------------|-------------------------|----------------------------|----------------------------|
|------------|---------------------|-------------|-------------------------|-------------------------|----------------------------|----------------------------|



| | | | | | | |
|-------------|---|---------|--------------|--------------|--------------|--------------|
| 50 x 50mm | 1 | MTT22 | MTT22GBT90 | MTT22GBT45 | MTT22GBI90 | MTT22GBI45 |
| | 2 | MTT22-2 | MTT22GBT90-2 | MTT22GBT45-2 | MTT22GBI90-2 | MTT22GBI45-2 |
| 75 x 75mm | 1 | MTT33 | MTT33GBT90 | MTT33GBT45 | MTT33GBI90 | MTT33GBI45 |
| | 2 | MTT33-2 | MTT33GBT90-2 | MTT33GBT45-2 | MTT33GBI90-2 | MTT33GBI45-2 |
| | 3 | MTT33-3 | MTT33GBT90-3 | MTT33GBT45-3 | MTT33GBI90-3 | MTT33GBI45-3 |
| 100 x 50mm | 1 | MTT42 | MTT42GBT90 | MTT42GBT45 | MTT42GBI90 | MTT42GBI45 |
| | 2 | MTT42-2 | MTT42GBT90-2 | MTT42GBT45-2 | MTT42GBI90-2 | MTT42GBI45-2 |
| | 3 | MTT42-3 | MTT42GBT90-3 | MTT42GBT45-3 | MTT42GBI90-3 | MTT42GBI45-3 |
| 100 x 100mm | 1 | MTT44 | MTT44GBT90 | MTT44GBT45 | MTT44GBI90 | MTT44GBI45 |
| | 2 | MTT44-2 | MTT44GBT90-2 | MTT44GBT45-2 | MTT44GBI90-2 | MTT44GBI45-2 |
| | 3 | MTT44-3 | MTT44GBT90-3 | MTT44GBT45-3 | MTT44GBI90-3 | MTT44GBI45-3 |
| 150 x 50mm | 1 | MTT62 | MTT62GBT90 | MTT62GBT45 | MTT62GBI90 | MTT62GBI45 |
| | 2 | MTT62-2 | MTT62GBT90-2 | MTT62GBT45-2 | MTT62GBI90-2 | MTT62GBI45-2 |
| | 3 | MTT62-3 | MTT62GBT90-3 | MTT62GBT45-3 | MTT62GBI90-3 | MTT62GBI45-3 |
| 150 x 100mm | 1 | MTT64 | MTT64GBT90 | MTT64GBT45 | MTT64GBI90 | MTT64GBI45 |
| | 2 | MTT64-2 | MTT64GBT90-2 | MTT64GBT45-2 | MTT64GBI90-2 | MTT64GBI45-2 |
| | 3 | MTT64-3 | MTT64GBT90-3 | MTT64GBT45-3 | MTT64GBI90-3 | MTT64GBI45-3 |
| 150 x 150mm | 1 | MTT66 | MTT66GBT90 | MTT66GBT45 | MTT66GBI90 | MTT66GBI45 |
| | 2 | MTT66-2 | MTT66GBT90-2 | MTT66GBT45-2 | MTT66GBI90-2 | MTT66GBI45-2 |
| | 3 | MTT66-3 | MTT66GBT90-3 | MTT66GBT45-3 | MTT66GBI90-3 | MTT66GBI45-3 |

The following sizes are also available to order (lead times apply).

| | | | | | | | |
|-------|------------|-------|-------------|--------|-------------|---------|-------------|
| code | size | code | size | code | size | code | size |
| MTT32 | 75 x 50mm | MTT84 | 200 x 100mm | MTT94 | 225 x 100mm | MTT124 | 300 x 100mm |
| MTT43 | 100 x 75mm | MTT86 | 200 x 150mm | MTT96 | 225 x 150mm | MTT126 | 300 x 150mm |
| MTT63 | 150 x 75mm | MTT88 | 200 x 200mm | MTT99 | 225 x 225mm | MTT128 | 300 x 200mm |
| MTT82 | 200 x 50mm | MTT92 | 225 x 50mm | MTT122 | 300 x 50mm | MTT129 | 300 x 225mm |
| MTT83 | 200 x 75mm | MTT93 | 225 x 75mm | MTT123 | 300 x 75mm | MTT1212 | 300 x 300mm |

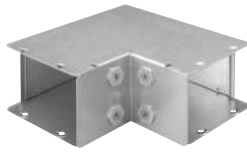
| 90° gusset bend outside lid | 45° gusset bend outside lid | Gusset tee top lid | Gusset tee inside lid | Gusset tee outside lid | End cap | Trunking hanger | U Shaped coupler |
|-----------------------------------------------------------------------------------|-----------------------------------------------------------------------------------|-----------------------------------------------------------------------------------|-----------------------------------------------------------------------------------|-----------------------------------------------------------------------------------|-------------------------------------------------------------------------------------|-------------------------------------------------------------------------------------|-------------------------------------------------------------------------------------|
|  |  |  |  |  |  |  |  |
| MTT22GB090 | MTT22GB045 | MTT22GTT | MTT22GTI | MTT22GTO | MTT22EC | MTT22TH | MTT22UC |
| MTT22GB090-2 | MTT22GB045-2 | MTT22GTT-2 | MTT22GTI-2 | MTT22GTO-2 | | | |
| MTT22GB090-3 | MTT22GB045-3 | MTT22GTT-3 | MTT22GTI-3 | MTT22GTO-3 | | | |
| MTT33GB090 | MTT33GB045 | MTT33GTT | MTT33GTI | MTT33GTO | MTT33EC | MTT33TH | MTT33UC |
| MTT33GB090-2 | MTT33GB045-2 | MTT33GTT-2 | MTT33GTI-2 | MTT33GTO-2 | | | |
| MTT33GB090-3 | MTT33GB045-3 | MTT33GTT-3 | MTT33GTI-3 | MTT33GTO-3 | | | |
| MTT42GB090 | MTT42GB045 | MTT42GTT | MTT42GTI | MTT42GTO | MTT42EC | MTT42TH | MTT42UC |
| MTT42GB090-2 | MTT42GB045-2 | MTT42GTT-2 | MTT42GTI-2 | MTT42GTO-2 | | | |
| MTT42GB090-3 | MTT42GB045-3 | MTT42GTT-3 | MTT42GTI-3 | MTT42GTO-3 | | | |
| MTT44GB090 | MTT44GB045 | MTT44GTT | MTT44GTI | MTT44GTO | MTT44EC | MTT44TH | MTT44UC |
| MTT44GB090-2 | MTT44GB045-2 | MTT44GTT-2 | MTT44GTI-2 | MTT44GTO-2 | | | |
| MTT44GB090-3 | MTT44GB045-3 | MTT44GTT-3 | MTT44GTI-3 | MTT44GTO-3 | | | |
| MTT62GB090 | MTT62GB045 | MTT62GTT | MTT62GTI | MTT62GTO | MTT62EC | MTT62TH | MTT62UC |
| MTT62GB090-2 | MTT62GB045-2 | MTT62GTT-2 | MTT62GTI-2 | MTT62GTO-2 | | | |
| MTT62GB090-3 | MTT62GB045-3 | MTT62GTT-3 | MTT62GTI-3 | MTT62GTO-3 | | | |
| MTT64GB090 | MTT64GB045 | MTT64GTT | MTT64GTI | MTT64GTO | MTT64EC | MTT64TH | MTT64UC |
| MTT64GB090-2 | MTT64GB045-2 | MTT64GTT-2 | MTT64GTI-2 | MTT64GTO-2 | | | |
| MTT64GB090-3 | MTT64GB045-3 | MTT64GTT-3 | MTT64GTI-3 | MTT64GTO-3 | | | |
| MTT66GB090 | MTT66GB045 | MTT66GTT | MTT66GTI | MTT66GTO | MTT66EC | MTT66TH | MTT66UC |
| MTT66GB090-2 | MTT66GB045-2 | MTT66GTT-2 | MTT66GTI-2 | MTT66GTO-2 | | | |
| MTT66GB090-3 | MTT66GB045-3 | MTT66GTT-3 | MTT66GTI-3 | MTT66GTO-3 | | | |

All products are supplied in pack quantities of one.



Sharp bend top lid

| code | size | pack |
|----------|-------------|------|
| MTT22SBT | 50 x 50mm | 1 |
| MTT32SBT | 75 x 50mm | 1 |
| MTT33SBT | 75 x 75mm | 1 |
| MTT42SBT | 100 x 50mm | 1 |
| MTT43SBT | 100 x 75mm | 1 |
| MTT44SBT | 100 x 100mm | 1 |
| MTT62SBT | 150 x 50mm | 1 |
| MTT63SBT | 150 x 75mm | 1 |
| MTT64SBT | 150 x 100mm | 1 |
| MTT66SBT | 150 x 150mm | 1 |



Sharp bend inside lid

| code | size | pack |
|----------|-------------|------|
| MTT22SBI | 50 x 50mm | 1 |
| MTT32SBI | 75 x 50mm | 1 |
| MTT33SBI | 75 x 75mm | 1 |
| MTT42SBI | 100 x 50mm | 1 |
| MTT43SBI | 100 x 75mm | 1 |
| MTT44SBI | 100 x 100mm | 1 |
| MTT62SBI | 150 x 50mm | 1 |
| MTT63SBI | 150 x 75mm | 1 |
| MTT64SBI | 150 x 100mm | 1 |
| MTT66SBI | 150 x 150mm | 1 |



Sharp bend outside lid

| code | size | pack |
|----------|-------------|------|
| MTT22SBO | 50 x 50mm | 1 |
| MTT32SBO | 75 x 50mm | 1 |
| MTT33SBO | 75 x 75mm | 1 |
| MTT42SBO | 100 x 50mm | 1 |
| MTT43SBO | 100 x 75mm | 1 |
| MTT44SBO | 100 x 100mm | 1 |
| MTT62SBO | 150 x 50mm | 1 |
| MTT63SBO | 150 x 75mm | 1 |
| MTT64SBO | 150 x 100mm | 1 |
| MTT66SBO | 150 x 150mm | 1 |



Sharp tee top lid

| code | size | pack |
|----------|-------------|------|
| MTT22STT | 50 x 50mm | 1 |
| MTT32STT | 75 x 50mm | 1 |
| MTT33STT | 75 x 75mm | 1 |
| MTT42STT | 100 x 50mm | 1 |
| MTT43STT | 100 x 75mm | 1 |
| MTT44STT | 100 x 100mm | 1 |
| MTT62STT | 150 x 50mm | 1 |
| MTT63STT | 150 x 75mm | 1 |
| MTT64STT | 150 x 100mm | 1 |
| MTT66STT | 150 x 150mm | 1 |



Intersection box

| code | size | pack |
|---------|-------------|------|
| MTT22IB | 50 x 50mm | 1 |
| MTT32IB | 75 x 50mm | 1 |
| MTT33IB | 75 x 75mm | 1 |
| MTT42IB | 100 x 50mm | 1 |
| MTT43IB | 100 x 75mm | 1 |
| MTT44IB | 100 x 100mm | 1 |
| MTT62IB | 150 x 50mm | 1 |
| MTT63IB | 150 x 75mm | 1 |
| MTT64IB | 150 x 100mm | 1 |
| MTT66IB | 150 x 150mm | 1 |



Reducer

| code | size | pack |
|-----------|----------------------------|------|
| MTTR33-22 | 75 x 75mm to 50 x 50mm | 1 |
| MTTR42-22 | 100 x 50mm to 50 x 50mm | 1 |
| MTTR44-22 | 100 x 100mm to 50 x 50mm | 1 |
| MTTR44-33 | 100 x 100mm to 75 x 75mm | 1 |
| MTTR64-44 | 150 x 100mm to 100 x 100mm | 1 |
| MTTR66-33 | 150 x 150mm to 75 x 75mm | 1 |
| MTTR66-44 | 150 x 150mm to 100 x 100mm | 1 |



Earth bonding link

| code | pack |
|------|------|
| MTTE | 50 |



Single socket plate

| code | size | pack |
|---------|-------|------|
| MTTSSP4 | 100mm | 1 |
| MTTSSP6 | 150mm | 1 |



Double socket plate

| code | size | pack |
|---------|-------|------|
| MTTDSP4 | 100mm | 1 |
| MTTDSP6 | 150mm | 1 |



Sleeve coupler

| code | size | pack |
|---------|-------|------|
| MTT22SC | 50mm | 2 |
| MTT33SC | 75mm | 2 |
| MTT44SC | 100mm | 2 |
| MTT66SC | 150mm | 2 |



Cable retainer

| code | size | pack |
|--------|-------|------|
| MTT2CR | 50mm | 1 |
| MTT3CR | 75mm | 1 |
| MTT4CR | 100mm | 1 |
| MTT6CR | 150mm | 1 |



Flange coupler

| code | size | pack |
|---------|-------|------|
| MTT22FC | 50mm | 2 |
| MTT33FC | 75mm | 2 |
| MTT44FC | 100mm | 2 |
| MTT66FC | 150mm | 2 |



IP4X cover strap

| code | size | pack |
|--------|-------|------|
| MTT2IP | 50mm | 1 |
| MTT3IP | 75mm | 1 |
| MTT4IP | 100mm | 1 |
| MTT6IP | 150mm | 1 |



Spare turnbuckles

| code | pack |
|------|------|
| MTTT | 25 |



Trunking lid

| code | size | pack |
|--------|------------|------|
| MTT2TL | 50mm x 3m | 1 |
| MTT3TL | 75mm x 3m | 1 |
| MTT4TL | 100mm x 3m | 1 |
| MTT6TL | 150mm x 3m | 1 |



Spare trunking screws

| code | pack |
|------|------|
| MTTS | 100 |

METAL LIGHTING TRUNKING

Metal lighting trunking to support, distribute and organise cables for lighting circuits. Offering robust protection, the system features snap on lids for quick and easy installation.

- Supplied in 3 metre and 4.5 lengths
- 50 x 50mm
- Snap on lids for quick and easy installation
- Slide in couplers



Trunking profiles



Lighting trunking

| code | size | pack |
|-------|-----------|----------|
| MTL3 | 50 x 50mm | 1 x 3m |
| MTL45 | 50 x 50mm | 1 x 4.5m |



PVC-U lid – 2m

| code | material | pack |
|--------|-------------|--------|
| MTLPLW | White PVC-U | 1 x 2m |



Metal lid – 2m

| code | material | pack |
|-------|----------|--------|
| MTLML | Metal | 1 x 2m |

Fittings



Long coupler

| code | pack |
|---------|------|
| MTL3LC3 | 1 |



2 way coupler top lid

| code | pack |
|---------|------|
| MTL2TC3 | 1 |



2 way coupler inside lid

| code | pack |
|---------|------|
| MTL2IC3 | 1 |



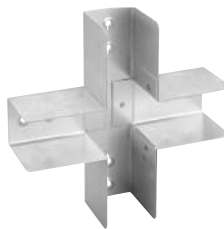
2 way coupler outside lid

| code | pack |
|---------|------|
| MTL2OC3 | 1 |



3 way coupler tee top lid

| code | pack |
|---------|------|
| MTL3TC3 | 1 |



3 way coupler cross top lid

| code | pack |
|---------|------|
| MTL4TC3 | 1 |



Suspension 11mm

| code | pack |
|---------|------|
| MTL3S11 | 1 |



Suspension fitting

| code | pack |
|--------|------|
| MTL3SF | 1 |



Blank end

| code | pack |
|---------|------|
| MTL3BE3 | 1 |



Cable retainer

| code | pack |
|--------|------|
| MTL3CR | 1 |

METAL TRUNKING

METAL STRUT

A metal framework strut system for independent use to connect lightweight structural loads in buildings such as metal cable tray or wire basket.

Available as slotted or plain versions, metal strut is easy to assemble, re-configure or modify and enables creation of a versatile framework within industrial settings.

- Light gauge or heavy gauge (1.5mm or 2.5mm thickness)
- Plain or slotted versions
- 3m or 6m lengths
- Two sizes – 41 x 21mm and 41 x 41mm
- Pre-galvanised steel or hot dip galvanised
- Back to back welded version available
- Standard slot sizes 28 x 14mm @ 50mm centres or 25 x 11mm @ 50mm centres

| Standard finish | |
|---------------------------|-----------------------------------------------|
| PG | HD |
| Pre-galvanised mild steel | Hot dipped zinc coated low carbon steel strip |

To indicate the finish you require, add the required finish to the end of the product code.

ie.
MTS41S325PG or
MTS41S325HD



Material and finish

Manufactured from (PG) pre-galvanised mild steel to BS EN 10326 or (HD) hot dip galvanised after manufacture to BS EN ISO 1461.

Product features

Back to back

Back to back welded channel is ideal for long spans where increased strength is required. Our back to back channels are heavy gauge (2.5mm thickness) in plain or slotted versions and in either a pre-galvanised steel or hot dip galvanised material.

Applications

Metal strut can be used in a variety of applications across different industries to provide robust structural support and stability. The system provides a sturdy framework for organising and securing components within buildings.



Approvals



- BS 7671:2018
- BS 6946

Light duty strut



Slotted strut - light duty 1.5mm

| code | size | pack |
|--------------|-----------|--------|
| MTS21S315PG* | 41 x 21mm | 1 x 3m |
| MTS41S315PG* | 41 x 41mm | 1 x 3m |

*Light duty versions are available in pre-galvanised finish only



Plain strut - light duty 1.5mm

| code | size | pack |
|--------------|-----------|--------|
| MTS21P315PG* | 41 x 21mm | 1 x 3m |
| MTS41P315PG* | 41 x 41mm | 1 x 3m |

Heavy duty strut



Slotted strut - heavy duty 2.5mm

| code | size | pack |
|-------------|-----------|--------|
| MTS21S325PG | 41 x 21mm | 1 x 3m |
| MTS21S625PG | 41 x 21mm | 1 x 6m |
| MTS41S325PG | 41 x 41mm | 1 x 3m |
| MTS41S625PG | 41 x 41mm | 1 x 6m |



Plain strut - heavy duty 2.5mm

| code | size | pack |
|-------------|-----------|--------|
| MTS21P325PG | 41 x 21mm | 1 x 3m |
| MTS21P625PG | 41 x 21mm | 1 x 6m |
| MTS41P325PG | 41 x 41mm | 1 x 3m |
| MTS41P625PG | 41 x 41mm | 1 x 6m |

Back to back strut



Slotted strut - heavy duty 2.5mm

| code | size | pack |
|----------------|-----------|--------|
| MTS41B2BS325PG | 41 x 41mm | 1 x 3m |
| MTS41B2BS625PG | 41 x 41mm | 1 x 6m |



Plain strut - heavy duty 2.5mm

| code | size | pack |
|----------------|-----------|--------|
| MTS41B2BP325PG | 41 x 41mm | 1 x 3m |
| MTS41B2BP625PG | 41 x 41mm | 1 x 6m |

Fittings



Cantilever arm

| code | size | pack |
|-----------|--------|------|
| MTS150CA | 150mm | 1 |
| MTS300CA | 300mm | 1 |
| MTS450CA | 450mm | 1 |
| MTS600CA | 600mm | 1 |
| MTS750CA | 750mm | 1 |
| MTS1000CA | 1000mm | 1 |



Back to back cantilever arm

| code | size | pack |
|--------------|--------|------|
| MTS150B2BCA | 150mm | 1 |
| MTS300B2BCA | 300mm | 1 |
| MTS450B2BCA | 450mm | 1 |
| MTS600B2BCA | 600mm | 1 |
| MTS750B2BCA | 750mm | 1 |
| MTS1000B2BCA | 1000mm | 1 |



Metal Channel Cover 3M

| code | size | pack |
|-------|-------|------|
| MTSCW | White | 1 |
| MTSCB | Black | 1 |



Channel nut long spring

| code | size | pack |
|----------|------|------|
| MTSM6LS | M6 | 100 |
| MTSM8LS | M8 | 100 |
| MTSM10LS | M10 | 100 |
| MTSM12LS | M12 | 100 |



Channel nut short spring

| code | size | pack |
|----------|------|------|
| MTSM6SS | M6 | 100 |
| MTSM8SS | M8 | 100 |
| MTSM10SS | M10 | 100 |
| MTSM12SS | M12 | 100 |



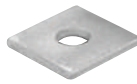
Channel nut no spring

| code | size | pack |
|----------|------|------|
| MTSM6NS | M6 | 100 |
| MTSM8NS | M8 | 100 |
| MTSM10NS | M10 | 100 |
| MTSM12NS | M12 | 100 |



Threaded rod - 3m

| code | size | pack |
|-----------|------|------|
| MTSM6ROD | M6 | 1 |
| MTSM8ROD | M8 | 1 |
| MTSM10ROD | M10 | 1 |
| MTSM12ROD | M12 | 1 |
| MTSM16ROD | M16 | 1 |
| MTSM20ROD | M20 | 1 |
| MTSM24ROD | M24 | 1 |



**Square plate washer
40mm x 40mm x 5mm**

| code | size | pack |
|-----------|------|------|
| MTS101M6 | M6 | 100 |
| MTS101M8 | M8 | 100 |
| MTS101M10 | M10 | 100 |
| MTS101M12 | M12 | 100 |



Flat plate

| code | size | pack |
|--------|--------|------|
| MTS102 | 2 hole | 1 |
| MTS103 | 3 hole | 1 |
| MTS104 | 4 hole | 1 |
| MTS105 | 5 hole | 1 |



Flat L bracket - 3 hole

| code | pack |
|--------|------|
| MTS106 | 1 |



Flat tee bracket - 4 hole

| code | pack |
|--------|------|
| MTS107 | 1 |



Flat cross bracket - 5 hole

| code | pack |
|--------|------|
| MTS108 | 1 |



Right angle bracket - 2 hole

| code | description | pack |
|--------|-------------|------|
| MTS109 | 1 + 1 | 1 |



Right angle bracket - 3 hole

| code | description | pack |
|--------|-------------|------|
| MTS110 | 2 + 1 | 1 |



Right angle bracket - 4 hole

| code | description | pack |
|--------|-------------|------|
| MTS111 | 3 + 1 | 1 |



Right angle bracket - 4 hole

| code | description | pack |
|--------|-------------|------|
| MTS112 | 2 + 2 | 1 |



Left hand corner tee bracket - 4 hole

| code | pack |
|--------|------|
| MTS113 | 1 |



Right hand corner tee bracket - 4 hole

| code | pack |
|--------|------|
| MTS114 | 1 |



Tee left angle bracket - 3 hole

| code | pack |
|--------|------|
| MTS115 | 1 |



Bent tee plate - 3 hole

| code | pack |
|--------|------|
| MTS116 | 1 |



Flat gusset L bracket - 4 hole

| code | pack |
|--------|------|
| MTS117 | 1 |



Right angle gusset bracket - 4 hole

| code | pack |
|--------|------|
| MTS118 | 1 |



45 degree obtuse angle bracket - 2 hole

| code | pack |
|----------|------|
| MTS11945 | 1 |



15 degree obtuse angle bracket - 2 hole

| code | pack |
|----------|------|
| MTS11915 | 1 |



22 degree obtuse angle bracket - 2 hole

| code | pack |
|----------|------|
| MTS11922 | 1 |



45 degree acute angle bracket - 2 hole

| code | pack |
|----------|------|
| MTS12045 | 1 |



Z bracket - 2 hole

| code | size | pack |
|--------|-----------|------|
| MTS121 | 41 x 21mm | 1 |



Z bracket - 3 hole

| code | size | pack |
|--------|-----------|------|
| MTS122 | 41 x 41mm | 1 |



Top hat bracket - 3 hole

| code | size | pack |
|--------|-----------|------|
| MTS123 | 41 x 21mm | 1 |



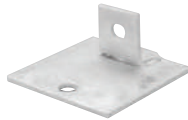
Top hat bracket - 5 hole

| code | size | pack |
|--------|-----------|------|
| MTS124 | 41 x 41mm | 1 |



Top hat bracket - 7 hole

| code | size | pack |
|--------|-----------|------|
| MTS125 | 41 x 82mm | 1 |



Single base plate bracket

| code | pack |
|--------|------|
| MTS126 | 1 |



Corner case plate bracket

| code | size | pack |
|--------|------|------|
| MTS127 | 41mm | 1 |



Back to back base plate bracket

| code | size | pack |
|--------|-------------|------|
| MTS128 | 41mm x 82mm | 1 |



Gusset base plate bracket

| code | size | pack |
|--------|------|------|
| MTS129 | 41mm | 1 |



Back to back gusset base plate bracket

| code | size | pack |
|--------|-----------|------|
| MTS130 | 41 x 82mm | 1 |



Toe beam clamp

| code | pack |
|--------|------|
| MTS131 | 1 |



Large C beam clamp

| code | pack |
|--------|------|
| MTS132 | 1 |



Small C beam clamp

| code | pack |
|--------|------|
| MTS133 | 1 |



Z beam clamp

| code | pack |
|--------|------|
| MTS134 | 1 |



Window bracket

| code | size | pack |
|--------|-----------|------|
| MTS135 | 41 x 41mm | 1 |
| MTS136 | 41 x 21mm | 1 |
| MTS137 | 41 x 82mm | 1 |



U beam clamp

| code | size | pack |
|--------|-----------|------|
| MTS138 | 41 x 41mm | 1 |



Internal coupler

| code | size | pack |
|--------|-----------|------|
| MTS139 | 41 x 41mm | 1 |
| MTS140 | 41 x 21mm | 1 |



External coupler

| code | size | pack |
|--------|-----------|------|
| MTS141 | 41 x 41mm | 1 |
| MTS142 | 41 x 21mm | 1 |



End cap white/black

| code | size | pack |
|------------|-----------|------|
| MTSCAP41WH | 41 x 41mm | 100 |
| MTSCAP21WH | 41 x 21mm | 100 |
| MTSCAP41BK | 41 x 41mm | 100 |
| MTSCAP21BK | 41 x 21mm | 100 |



Hexagonal nut

| code | size | pack |
|-----------|------|------|
| MTSHEXM6 | M6 | 100 |
| MTSHEXM8 | M8 | 100 |
| MTSHEXM10 | M10 | 100 |



Purlin Clip

| code | pack |
|-------|------|
| MTSPC | 1 |



Hexagonal set screw

| | | |
|--------------|------------|-----|
| MTSHEXSM625 | M6 x 25mm | 100 |
| MTSHEXSM630 | M6 x 30mm | 100 |
| MTSHEXSM640 | M6 x 40mm | 100 |
| MTSHEXSM825 | M8 x 25mm | 100 |
| MTSHEXSM830 | M8 x 30mm | 100 |
| MTSHEXSM840 | M8 x 40mm | 100 |
| MTSHEXSM1025 | M10 x 25mm | 100 |
| MTSHEXSM1030 | M10 x 30mm | 100 |
| MTSHEXSM1040 | M10 x 40mm | 100 |
| MTSHEXSM1225 | M12 x 25mm | 100 |
| MTSHEXSM1230 | M12 x 30mm | 100 |
| MTSHEXSM1240 | M12 x 40mm | 100 |



Penny washer

| | | |
|------------|------------|-----|
| MTSPWM625 | M6 x 25mm | 100 |
| MTSPWM825 | M8 x 25mm | 100 |
| MTSPWM1025 | M10 x 25mm | 100 |
| MTSPWM1225 | M12 x 25mm | 100 |
| MTSPWM630 | M6 x 30mm | 100 |
| MTSPWM830 | M8 x 30mm | 100 |
| MTSPWM1030 | M10 x 30mm | 100 |
| MTSPWM1230 | M12 x 30mm | 100 |



M10 Threaded Rod Connector

| | |
|---------|----|
| MTSCM10 | 10 |
|---------|----|



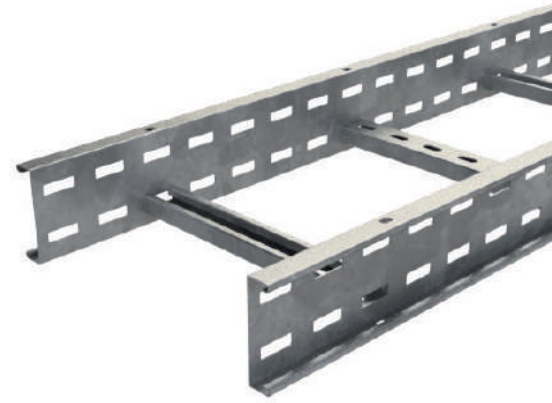
M10 G Clamp

| | |
|---------|---|
| MTSGM10 | 1 |
|---------|---|

METAL CABLE LADDER

Basor metal cable ladder is the ideal solution for routing heavy duty cables in large areas that have wide spacing between supports, as is often the case in power plants, airports and heavy industry environments.

- Product widths from 100mm to 900mm
- Product heights of 75mm, 100mm, 125mm, and 150mm.
- Greater load capacity due to rail design
- Safety edge that provides increased strength and protection for installers
- Strut-type rungs 41 x 21mm
- Hot dip galvanised steel finish
- Perforated side panel
- Compatible with and fixable to our ranges of metal strut and suspension systems
- Light, medium, heavy and extra heavy duty versions available



Product features

The perforated side panel allows ventilation in the event a cover is installed. In addition, the side panel enables installation in situations where cutting on-site is required, as there is no need to drill the rail to assemble the joint.

Applications

Metal cable ladder is suitable for use in heavy industry environments such as power plants, airports, tunnels, bridges, railways and underground environments.

Approvals



- EN 61537 – Cable management. Cable tray systems and cable ladder systems
- EN 50085 – Cable trunking systems and cable ducting systems for electrical installations



Ladder and covers



Light Duty Ladder 75mm high – 1.5mm gauge

| code | width x height | pack |
|--------|----------------|--------|
| 215136 | 100 x 75mm | 1 x 3m |
| 215137 | 150 x 75mm | 1 x 3m |
| 215138 | 300 x 75mm | 1 x 3m |
| 215139 | 450 x 75mm | 1 x 3m |
| 215140 | 600 x 75mm | 1 x 3m |
| 215141 | 750 x 75mm | 1 x 3m |
| 215142 | 900 x 75mm | 1 x 3m |



Medium Duty Ladder 100mm high – 1.5mm gauge

| code | width x height | pack |
|--------|----------------|--------|
| 215143 | 150 x 100mm | 1 x 3m |
| 215144 | 300 x 100mm | 1 x 3m |
| 215145 | 450 x 100mm | 1 x 3m |
| 215146 | 600 x 100mm | 1 x 3m |
| 215147 | 750 x 100mm | 1 x 3m |
| 215148 | 900 x 100mm | 1 x 3m |



Heavy Duty Ladder 125mm high – 2mm gauge

| code | width x height | pack |
|--------|----------------|--------|
| 215149 | 150 x 125mm | 1 x 3m |
| 215150 | 300 x 125mm | 1 x 3m |
| 215151 | 450 x 125mm | 1 x 3m |
| 215152 | 600 x 125mm | 1 x 3m |
| 215153 | 750 x 125mm | 1 x 3m |
| 215154 | 900 x 125mm | 1 x 3m |



Extra Heavy Ladder 150mm high – 2mm gauge

| code | width x height | pack |
|--------|----------------|--------|
| 215155 | 150 x 150mm | 1 x 3m |
| 206437 | 300 x 150mm | 1 x 3m |
| 215156 | 450 x 150mm | 1 x 3m |
| 206439 | 600 x 150mm | 1 x 3m |
| 215157 | 750 x 150mm | 1 x 3m |
| 215158 | 900 x 150mm | 1 x 3m |



Ladder Cover – 1.5mm gauge

| code | width | pack |
|--------|-------|--------|
| 209598 | 100mm | 1 x 3m |
| 209599 | 150mm | 1 x 3m |
| 209600 | 300mm | 1 x 3m |
| 209601 | 450mm | 1 x 3m |
| 209602 | 600mm | 1 x 3m |
| 209603 | 750mm | 1 x 3m |
| 209604 | 900mm | 1 x 3m |







Standard finish

HD

Hot dipped zinc coated low carbon steel strip

Lead times will apply to orders placed for metal cable ladder. Please ask the technical team for details.

See page 17 for fixing accessories

| | | 90 degree flat bend | 45 degree flat bend | Inside riser | Outside riser | Tee | Cross |
|------------------|---------------|-----------------------------------------------------------------------------------|-----------------------------------------------------------------------------------|-----------------------------------------------------------------------------------|------------------------------------------------------------------------------------|-------------------------------------------------------------------------------------|-------------------------------------------------------------------------------------|
| | Size W x H |  |  |  |  |  |  |
| LIGHT DUTY | 100 x 75mm | 215184 | 227080 | 215232 | 215280 | 215328 | 215376 |
| | 150 x 75mm | 215185 | 227081 | 215233 | 215281 | 215329 | 215377 |
| | 300 x 75mm | 215186 | 227082 | 215234 | 215282 | 215330 | 215378 |
| | 450 x 75mm | 215187 | 227083 | 215235 | 215283 | 215331 | 215379 |
| | 600 x 75mm | 215188 | 227084 | 215236 | 215284 | 215332 | 215380 |
| | 750 x 75mm | 215189 | 227085 | 215237 | 215285 | 215333 | 215381 |
| MEDIUM DUTY | 150 x 100mm | 215191 | 227087 | 215239 | 215287 | 215335 | 215383 |
| | 300 x 100mm | 215192 | 227088 | 215240 | 215288 | 215336 | 215384 |
| | 450 x 100mm | 215193 | 227089 | 215241 | 215289 | 215337 | 215385 |
| | 600 x 100mm | 215194 | 227090 | 215242 | 215290 | 215338 | 215386 |
| | 750 x 100mm | 215195 | 227091 | 215243 | 215291 | 215339 | 215387 |
| | 900 x 100mm | 215196 | 227092 | 215244 | 215292 | 215340 | 215388 |
| HEAVY DUTY | 150 x 125mm | 215197 | 227093 | 215245 | 215293 | 215341 | 215389 |
| | 300 x 125mm | 215198 | 227094 | 215246 | 215294 | 215342 | 215390 |
| | 450 x 125mm | 215199 | 227095 | 215247 | 215295 | 215343 | 215391 |
| | 600 x 125mm | 215200 | 227096 | 215248 | 215296 | 215344 | 215392 |
| | 750 x 125mm | 215201 | 227097 | 215249 | 215297 | 215345 | 215393 |
| | 900 x 125mm | 215202 | 227098 | 215250 | 215298 | 215346 | 215394 |
| EXTRA HEAVY DUTY | 150 x 150mm | 215203 | 227099 | 215251 | 215299 | 215347 | 215395 |
| | 300 x 150mm | 206962 | 219887 | 206968 | 206974 | 206980 | 206986 |
| | 450 x 150mm | 215204 | 219888 | 215252 | 215300 | 215348 | 215396 |
| | 600 x 150mm | 206964 | 219889 | 206970 | 206976 | 206982 | 206988 |
| | 750 x 150mm | 215205 | 227100 | 215253 | 215301 | 215349 | 215397 |
| | 900 x 150mm | 215206 | 227101 | 215254 | 215302 | 215350 | 215398 |

All products are supplied in pack quantities of one.

Vertical text: Joints & fixing accessories



Union joint

| code | height | pack |
|--------|--------|------|
| 215424 | 75mm | 1 |
| 215425 | 100mm | 1 |
| 215426 | 125mm | 1 |
| 206445 | 150mm | 1 |



Knuckle joint

| code | height | pack |
|--------|--------|------|
| 215427 | 75mm | 1 |
| 215428 | 100mm | 1 |
| 215429 | 125mm | 1 |
| 206447 | 150mm | 1 |



Hinge joint

| code | height | pack |
|--------|--------|------|
| 215430 | 75mm | 1 |
| 215431 | 100mm | 1 |
| 215432 | 125mm | 1 |
| 206449 | 150mm | 1 |



GC nuts and bolts

| code | | pack |
|--------|--------------------|------|
| 206826 | Hot dip galvanised | 100 |

For use with all fixing accessories, brackets, frames and covers



Flange clamp

| code | pack |
|--------|------|
| 210267 | 1 |



Rising gripper

| code | pack |
|--------|------|
| 218533 | 1 |



Hold down bracket

| code | pack |
|--------|------|
| 200855 | 1 |

WIRE BASKET SYSTEMS

Basor Wire Basket allows simple routing of power and data cables within sections of metal basket offering maximum cable ventilation and a high level of resistance to cable movement.

The 65mm deep basket is fast coupling thanks to the integral couplers which results in reduced installation times and labour savings.

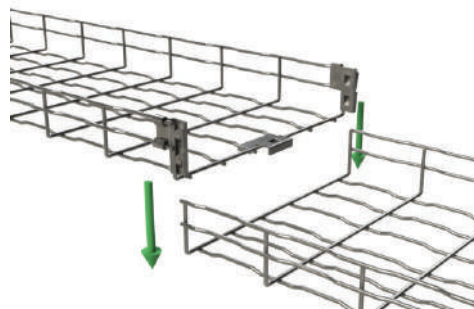
A unique rippled wire design enhances the product strength and resists flexing.



Fast-Coupling

Fast-Coupling Wire Basket is quick and simple to install:

- Two step mounting: fitting and pressure.
- The couplers at the end of the tray are used as guides in the assembly process.
- Once the couplers are connected the system offers excellent earth continuity across the joints.



Material and finish

Our wire basket is electro-zinc coated and is recommended for interior installations.

We can provide a quotation for hot dip galvanised or stainless steel finishes to suit exterior installations but these are subject to longer lead times. The below table identifies the finish suitable for the environment.

| | | Electro-Zinc | Hot-Dip Galvanised Steel | i316 Stainless-Steel |
|----------|-------------------|--------------------|--------------------------|----------------------|
| Interior | Dry | Recommended | Overspecified | Overspecified |
| | Humid | Limited Resistance | Recommended | Overspecified |
| | Chemical industry | Not recommended | Limited Resistance | Overspecified |
| | Food industry | Not recommended | Not recommended | Overspecified |
| Exterior | Urban | Limited Resistance | Recommended | Overspecified |
| | Chemical industry | Not recommended | Limited Resistance | Overspecified |
| | Food industry | Not recommended | Limited Resistance | Recommended |

Approvals

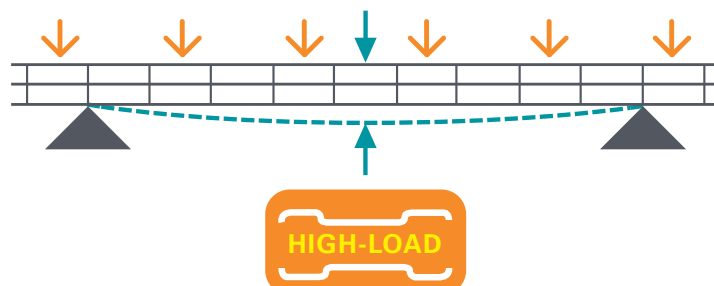


- UL Certification E358301 EN61537 – Cable Management
- IEC 61537:2006 Cable management – Cable tray systems and cable ladder systems.



Rippled design

The unique rippled design of the base of the basket allows for the easy threading of cable ties and increased load capacity with greater resistance to flexing.



WIRE BASKET

Basor Wire Basket is a popular and effective solution for installing power and data cables. Sections of the strong and lightweight basket provide a sturdy platform for the cables, supporting their weight and giving an excellent aesthetic finish.

- Ripple design offers cable ventilation and a high level of resistance to cable movement
- Simple manipulations to the wire basket can overcome complicated changes in direction
- Safety edges to prevent cable damage and personal injury
- High cable capacity
- Electro-Zinc finish
- Fire resistant to DIN 4102-12 E90



| |
|------------------|
| Standard finish |
| EZ |
| EZ: Electro-Zinc |

Wire Basket is available in Electro-Zinc as standard.

Finish options: Hot-dip galvanised steel and stainless steel (316) are available but these are subject to minimum quantity orders and longer lead times.

65mm Height



- 65mm height
- Integral couplers for quick and easy connection in just two steps and only 4 seconds!
- The position of the couplers creates a guide for fast and easy installation
- No tools required
- Reduced installation time results in saving labour costs

Fast-Coupling Wire Basket 65mm Height

| code | description | dimensions (mm) | | | pack | |
|----------|-------------|-----------------|--------|--------|--------|--|
| | | width | height | length | | |
| MT2/7389 | 60 x 65mm | 60 | 65 | 3000 | 2 x 3m | |
| MT2/7248 | 100 x 65mm | 100 | 65 | 3000 | 2 x 3m | |
| MT2/7249 | 150 x 65mm | 150 | 65 | 3000 | 2 x 3m | |
| MT2/7250 | 200 x 65mm | 200 | 65 | 3000 | 2 x 3m | |
| MT2/7251 | 300 x 65mm | 300 | 65 | 3000 | 2 x 3m | |
| MT2/7394 | 400 x 65mm | 400 | 65 | 3000 | 2 x 3m | |
| MT2/7395 | 500 x 65mm | 500 | 65 | 3000 | 2 x 3m | |
| MT2/7396 | 600 x 65mm | 600 | 65 | 3000 | 2 x 3m | |

35mm Height

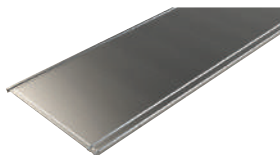


- 35mm height
- Assemble using our range of Fast Fix Clip on couplers – no bolts required

Standard Wire Basket 35mm Height

| code | description | dimensions (mm) | | | pack | |
|----------|-------------|-----------------|--------|--------|--------|--|
| | | width | height | length | | |
| MT2/3616 | 100 x 35mm | 100 | 35 | 3000 | 2 x 3m | |
| MT2/3617 | 150 x 35mm | 150 | 35 | 3000 | 2 x 3m | |
| MT2/3618 | 200 x 35mm | 200 | 35 | 3000 | 2 x 3m | |
| MT2/3619 | 300 x 35mm | 300 | 35 | 3000 | 2 x 3m | |

Covers



- Cover provides protection and eliminates dirt and dust build-up on cables
- Galvanised steel finish



Wire Basket Cover

| code | description | dimensions (mm) | | | pack |
|----------|-------------|-----------------|--------|-----------------------|--------|
| | | width | length | weight (kg) per metre | |
| MT2/1312 | Cover 100mm | 102 | 3000 | 0.55 | 2 x 3m |
| MT2/1313 | Cover 150mm | 152 | 3000 | 0.76 | 2 x 3m |
| MT2/1314 | Cover 200mm | 202 | 3000 | 0.98 | 2 x 3m |
| MT2/1316 | Cover 300mm | 302 | 3000 | 1.55 | 2 x 3m |
| MT2/1317 | Cover 400mm | 402 | 2000 | 2.19 | 2 x 2m |
| MT2/1318 | Cover 500mm | 502 | 2000 | 3.11 | 2 x 2m |
| MT2/1319 | Cover 600mm | 602 | 2000 | 3.95 | 2 x 2m |

Self fixing dividing fillet

| code | description | pack |
|----------|-------------|---------|
| MT2/3476 | 35mm | 10 x 3m |
| MT2/2066 | 60mm | 10 x 3m |

Attaches to wire basket using self fixing clip



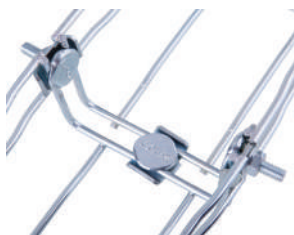
Fast fix clip on coupler - 35mm

| | |
|----------|------|
| code | pack |
| MT2/7271 | 10 |



Fast fix clip on coupler - 65mm

| | |
|----------|------|
| code | pack |
| MT2/6217 | 10 |



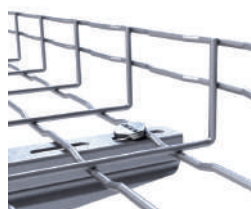
Basket connector bolt

| | |
|----------|------|
| code | pack |
| MT2/4364 | 10 |



Basket connector bracket

| | |
|----------|------|
| code | pack |
| MT2/4919 | 10 |



Nut and bolt

| | |
|----------|------|
| code | pack |
| MT2/4362 | 10 |



Bend connector bolt

| | |
|----------|------|
| code | pack |
| MT2/5059 | 1 |



Ceiling support plate

| | |
|----------|------|
| code | pack |
| MT2/2064 | 10 |



Wall bracket support plate

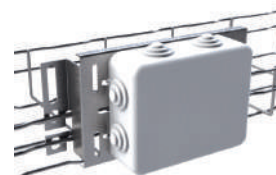
| | |
|----------|------|
| code | pack |
| MT2/0355 | 10 |

Please note: these are sold in singles; two are needed for fittings as per the image. Nut and bolt are not supplied.



Conduit feed plate

| | |
|-----------|------|
| code | pack |
| MT2/18798 | 20 |



Universal box plate

| code | description | pack |
|----------|---------------------------|------|
| MT2/0358 | Large universal box plate | 4 |
| MT2/0359 | Small universal box plate | 8 |



Cable drop out plate

| code | pack |
|----------|------|
| MT2/6451 | 1 |



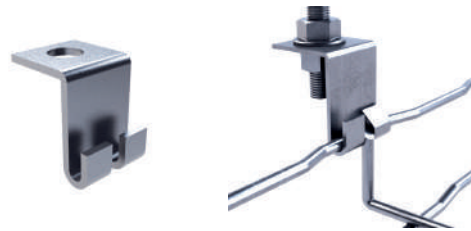
Floor bracket

| code | pack |
|----------|------|
| MT2/5590 | 1 |



Side support clip 65mm

| code | pack |
|----------|------|
| MT2/0360 | 10 |



Side support clip

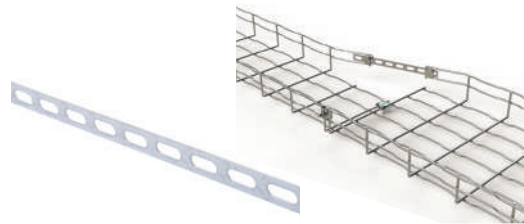
| code | pack |
|----------|------|
| MT2/5724 | 1 |

Accepts 10mm mounting stud



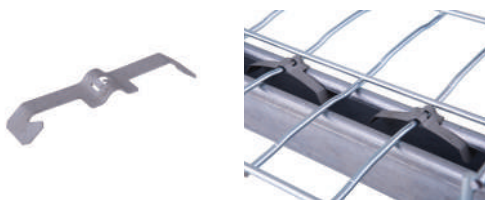
Lighting attachment plate

| code | pack |
|----------|------|
| MT2/5906 | 1 |



Multi-union joint

| code | pack |
|----------|------|
| MT2/0357 | 1 |



Clip to secure basket to strut

| code | pack |
|-----------|------|
| MT2/10284 | 10 |



Variable support bracket

| code | pack |
|----------|------|
| MT2/6477 | 10 |



Cutting tool

| code | pack |
|----------|------|
| MT2/5066 | 1 |



Spray paint 98% zinc

| code | pack |
|----------|------|
| MT2/7224 | 1 |



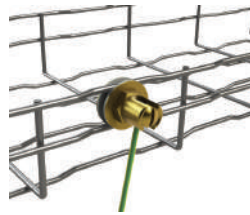
M8 threaded rod

| code | pack |
|----------|---------|
| MT2/3397 | 10 x 1m |



M8 nut

| code | pack |
|---------|------|
| 2/17553 | 10 |



Earth bonding connector

| code | pack |
|----------|------|
| MT2/6797 | 10 |



Fast fix wall bracket

| code | description | pack |
|----------|-------------|------|
| MT2/7230 | 100mm | 1 |
| MT2/7231 | 150mm | 1 |
| MT2/7232 | 200mm | 1 |
| MT2/7233 | 300mm | 1 |
| MT2/7234 | 400mm | 1 |



Wall bracket supporting piece

| code | pack |
|----------|------|
| MT2/6240 | 1 |

Ceiling brackets



Fast fix ceiling bracket

| code | description | height | pack |
|----------|-------------|--------|------|
| MT2/7235 | 100mm | 175mm | 1 |
| MT2/7236 | 150mm | 175mm | 1 |
| MT2/7237 | 200mm | 175mm | 1 |
| MT2/7238 | 300mm | 175mm | 1 |



Support strut leg

| code | leg height | pack |
|----------|------------|------|
| MT2/5602 | 142mm | 1 |

Suspension frames



Fast fix suspension frame base (rods sold separately)

| code | description | pack |
|----------|-------------|------|
| MT2/3630 | 100mm | 1 |
| MT2/1073 | 150mm | 1 |
| MT2/1074 | 200mm | 1 |
| MT2/1076 | 300mm | 1 |
| MT2/3629 | 400mm | 1 |
| MT2/1077 | 500mm | 1 |
| MT2/5941 | 600mm | 1 |



Stand off bracket

| code | description | pack |
|----------|-------------|------|
| MT2/1046 | 100mm | 1 |
| MT2/1047 | 150mm | 1 |
| MT2/1048 | 200mm | 1 |
| MT2/1049 | 300mm | 1 |
| MT2/3413 | 400mm | 1 |
| MT2/3414 | 500mm | 1 |
| MT2/3415 | 600mm | 1 |

Cablelay Matting



Cablelay Matting Class 0

| code | width | pack |
|----------|-------|---------|
| WBM0660 | 60mm | 1 x 30m |
| WBM06100 | 100mm | 1 x 30m |
| WBM06150 | 150mm | 1 x 30m |
| WBM06200 | 200mm | 1 x 30m |
| WBM06300 | 300mm | 1 x 30m |
| WBM06400 | 400mm | 1 x 30m |
| WBM06500 | 500mm | 1 x 30m |
| WBM06600 | 600mm | 1 x 30m |



Cablelay Tape

| code | description | pack |
|-------|-------------|--------------|
| WBM0T | LSOH | 1 x 15m roll |

Cablelay Matting

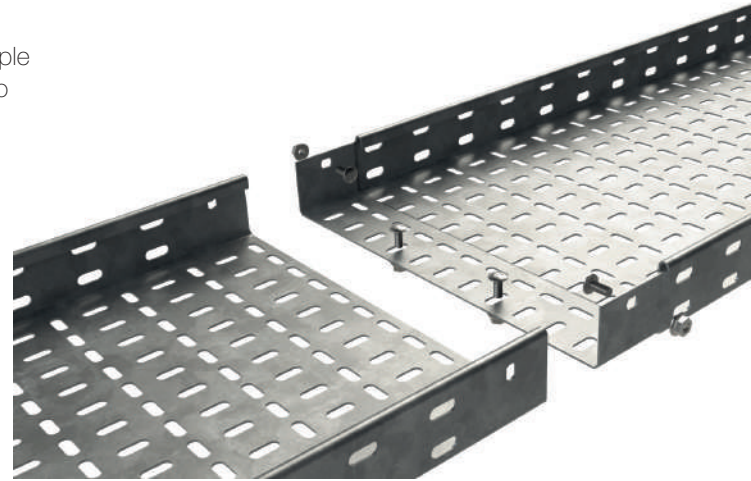
Cablelay is laid within lengths of wire basket or tray to protect cables from protrusions, sharp edges, rough surfaces and kinking ridges thus maintaining the integrity of the data cables.

METAL CABLE TRAY SYSTEMS

The Basor range of fast coupling metal cable tray allows for the simple routing and support of power and data cables. Strong and simple to install, metal cable tray is available in light, medium and heavy-duty profiles and features a pre-galvanised finish.

The sections of metal tray simply interconnect and bolt together for quick and easy installation, saving time and eliminating the need for separate couplers.

BE Basor
CABLE TRAY SPECIALIST



Applications

Metal cable tray is ideally suited for installation into many commercial and industrial environments, permitting the upgrade, expansion, re-configuration or relocation of power and data network as required.

- Industrial - Manufacturing, Data Centres, Warehouses and Distribution Centres.
- Commercial - Offices and Retail Outlets.
- Public Sector – Education and Healthcare in power and data areas or above suspended ceilings.



Material and finish

Metal cable tray is Pre-Galvanised steel and is recommended for interior installations.

We can provide a quotation for hot dip galvanised or stainless steel (i316) finishes to suit exterior installations but these are subject to longer lead times.

Product features

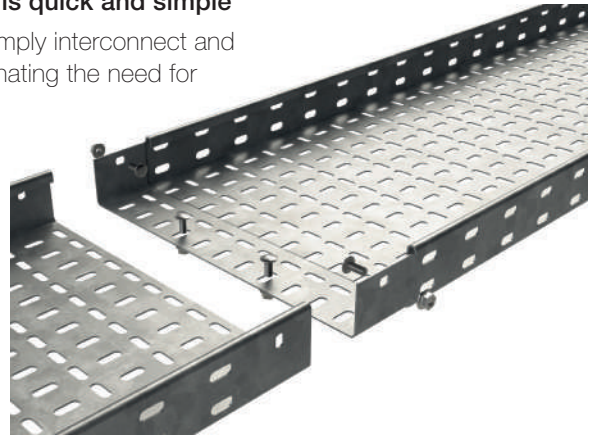
Installation is quick and easy when using the adjustable riser.

The adjustable riser can be simply formed to the exact height and angle required.



Tray connection is quick and simple

Sections of tray simply interconnect and bolt together eliminating the need for couplers



Approvals



- EN 61537 – Cable management. Cable tray systems and cable ladder systems
- EN 50085 – Cable trunking systems and cable ducting systems for electrical installations



Linian Cable Tray Clips

LINIAN Cable Tray Clips provide a faster, safer and fully compliant solution for securing cables to metal cable trays. The clip's simple design allows it to lock into place by hand — no tools, no tensioning, and significantly reduced installation time.

Fire-Safety Compliance

LINIAN Cable Tray Clips maintain their hold under extreme heat and comply with regulation 521.11.201 of BS 7671:2008+A3:2015, giving you peace of mind on fire-critical installations.

Built to Last

Manufactured in the UK from galvanised steel, the clips are fire-rated, non-corrosive and weather-resistant, ensuring long-term durability.

See page 28

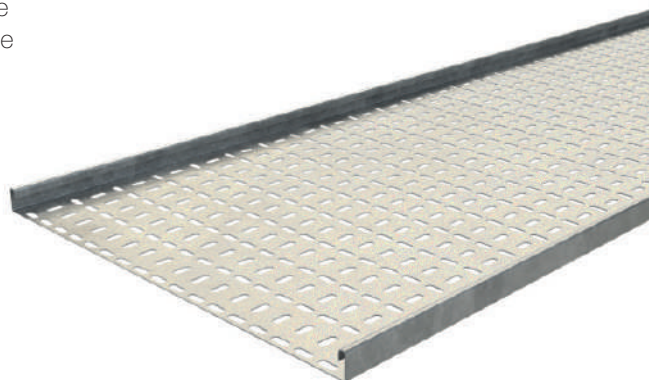


NEW

METAL CABLE TRAY

Basor metal cable tray is ideal for the support of power and data cables in commercial and industrial installations. Sections of metal tray are simply bolted together for quick and easy installation, saving time and eliminating the need for separate couplers.

- Light, medium and heavy duty
- Product widths of 50 to 600mm
- Fast-coupling
- Reduced installation time, saving labour costs
- Pre-galvanised finish
- No couplers required
- Full range of fittings



| |
|------------------------|
| Standard finish |
| PG |
| PG: Pre-galvanised |

Metal tray is available pre-galvanised as standard.

Hot-dip galvanised steel and stainless steel (316) are available but these are subject to minimum quantity orders and longer lead times.

Cable tray



Cable tray - light duty

| code | width x height | pack |
|----------|----------------|--------|
| 203658 * | 50 x 12mm | 1 x 3m |
| 203659 | 75 x 12mm | 1 x 3m |
| 203660 | 100 x 12mm | 1 x 3m |
| 203661 | 150 x 12mm | 1 x 3m |
| 203662 | 225 x 12mm | 1 x 3m |
| 203663 | 300 x 12mm | 1 x 3m |

* 50 x 12mm not available as fast coupling - couplers are required.



Cable tray - medium duty

| code | width x height | pack |
|----------|----------------|--------|
| 203708 * | 50 x 25mm | 1 x 3m |
| 203709 | 75 x 25mm | 1 x 3m |
| 203710 | 100 x 25mm | 1 x 3m |
| 203711 | 150 x 25mm | 1 x 3m |
| 203712 | 225 x 25mm | 1 x 3m |
| 203713 | 300 x 25mm | 1 x 3m |
| 203714 | 450 x 25mm | 1 x 3m |
| 203715 | 600 x 25mm | 1 x 3m |

* 50 x 25mm not available as fast coupling - couplers are required.



Cable tray - heavy duty

| code | width x height | pack |
|--------|----------------|--------|
| 203785 | 75 x 50mm | 1 x 3m |
| 203786 | 100 x 50mm | 1 x 3m |
| 203787 | 150 x 50mm | 1 x 3m |
| 203788 | 225 x 50mm | 1 x 3m |
| 203789 | 300 x 50mm | 1 x 3m |
| 203790 | 450 x 50mm | 1 x 3m |
| 203791 | 600 x 50mm | 1 x 3m |



Divider profile 3m

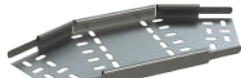
| code | pack |
|----------|---------|
| MT2/3476 | 10 x 3m |

Light duty fittings



90 degree flat bend

| code | width | pack |
|--------|-------|------|
| 204321 | 50mm | 1 |
| 203669 | 75mm | 1 |
| 203670 | 100mm | 1 |
| 203671 | 150mm | 1 |
| 203672 | 225mm | 1 |
| 203673 | 300mm | 1 |



45 degree flat bend

| code | width | pack |
|--------|-------|------|
| 225465 | 50mm | 1 |
| 225466 | 75mm | 1 |
| 225467 | 100mm | 1 |
| 225468 | 150mm | 1 |
| 225469 | 225mm | 1 |
| 225470 | 300mm | 1 |



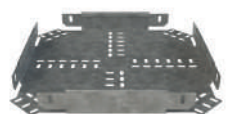
Equal tee

| code | width | pack |
|--------|-------|------|
| 203688 | 50mm | 1 |
| 203689 | 75mm | 1 |
| 203690 | 100mm | 1 |
| 203691 | 150mm | 1 |
| 203692 | 225mm | 1 |
| 203693 | 300mm | 1 |



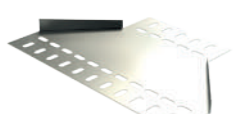
Adjustable riser

| code | width | pack |
|--------|-------|------|
| 204229 | 50mm | 1 |
| 204230 | 75mm | 1 |
| 204231 | 100mm | 1 |
| 204232 | 150mm | 1 |
| 204233 | 225mm | 1 |
| 204234 | 300mm | 1 |



4-way equal cross

| code | width | pack |
|--------|-------|------|
| 203698 | 50mm | 1 |
| 203699 | 75mm | 1 |
| 203700 | 100mm | 1 |
| 203701 | 150mm | 1 |
| 203702 | 225mm | 1 |
| 203703 | 300mm | 1 |



Reducer

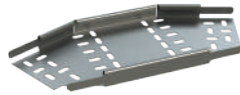
| code | width | pack |
|--------|--------------|------|
| 226033 | 150 to 50mm | 1 |
| 226034 | 300 to 150mm | 1 |

Medium duty fittings



90 degree flat bend

| code | width | pack |
|--------|-------|------|
| 203745 | 50mm | 1 |
| 203746 | 75mm | 1 |
| 203747 | 100mm | 1 |
| 203748 | 150mm | 1 |
| 203749 | 225mm | 1 |
| 203750 | 300mm | 1 |
| 203751 | 450mm | 1 |
| 203752 | 600mm | 1 |



45 degree flat bend

| code | width | pack |
|--------|-------|------|
| 225471 | 50mm | 1 |
| 225472 | 75mm | 1 |
| 225473 | 100mm | 1 |
| 225474 | 150mm | 1 |
| 225475 | 225mm | 1 |
| 225476 | 300mm | 1 |
| 225477 | 450mm | 1 |
| 225478 | 600mm | 1 |



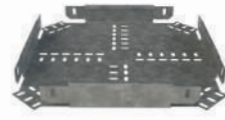
Equal tee

| code | width | pack |
|--------|-------|------|
| 203765 | 50mm | 1 |
| 203766 | 75mm | 1 |
| 203767 | 100mm | 1 |
| 203768 | 150mm | 1 |
| 203769 | 225mm | 1 |
| 203770 | 300mm | 1 |
| 203771 | 450mm | 1 |
| 203772 | 600mm | 1 |



Adjustable riser

| code | width | pack |
|--------|-------|------|
| 204239 | 50mm | 1 |
| 204240 | 75mm | 1 |
| 204241 | 100mm | 1 |
| 204242 | 150mm | 1 |
| 204243 | 225mm | 1 |
| 204244 | 300mm | 1 |
| 204245 | 450mm | 1 |
| 204246 | 600mm | 1 |



4-way equal cross

| code | width | pack |
|--------|-------|------|
| 203775 | 50mm | 1 |
| 203776 | 75mm | 1 |
| 203777 | 100mm | 1 |
| 203778 | 150mm | 1 |
| 203779 | 225mm | 1 |
| 203780 | 300mm | 1 |
| 203781 | 450mm | 1 |
| 203782 | 600mm | 1 |



Reducer

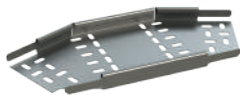
| code | width | pack |
|--------|--------------|------|
| 226035 | 150 to 50mm | 1 |
| 226093 | 225 to 100mm | 1 |
| 226094 | 225 to 150mm | 1 |
| 226036 | 300 to 150mm | 1 |
| 226037 | 300 to 225mm | 1 |
| 226038 | 450 to 300mm | 1 |

Heavy duty fittings



90 degree flat bend

| code | width | pack |
|--------|-------|------|
| 203811 | 75mm | 1 |
| 203812 | 100mm | 1 |
| 203813 | 150mm | 1 |
| 203814 | 225mm | 1 |
| 203815 | 300mm | 1 |
| 203816 | 450mm | 1 |
| 203817 | 600mm | 1 |



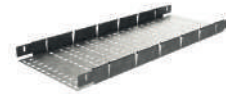
45 degree flat bend

| code | width | pack |
|--------|-------|------|
| 225481 | 75mm | 1 |
| 225482 | 100mm | 1 |
| 225483 | 150mm | 1 |
| 225484 | 225mm | 1 |
| 225485 | 300mm | 1 |
| 225486 | 450mm | 1 |
| 225487 | 600mm | 1 |



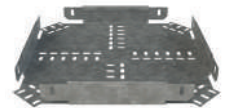
Equal tee

| code | width | pack |
|--------|-------|------|
| 203829 | 75mm | 1 |
| 203830 | 100mm | 1 |
| 203831 | 150mm | 1 |
| 203832 | 225mm | 1 |
| 203833 | 300mm | 1 |
| 203834 | 450mm | 1 |
| 203835 | 600mm | 1 |



Adjustable riser

| code | width | pack |
|--------|-------|------|
| 204249 | 75mm | 1 |
| 204250 | 100mm | 1 |
| 204251 | 150mm | 1 |
| 204252 | 225mm | 1 |
| 204253 | 300mm | 1 |
| 204254 | 450mm | 1 |
| 204255 | 600mm | 1 |



4-way equal cross

| code | width | pack |
|--------|-------|------|
| 203838 | 75mm | 1 |
| 203839 | 100mm | 1 |
| 203840 | 150mm | 1 |
| 203841 | 225mm | 1 |
| 203842 | 300mm | 1 |
| 203843 | 450mm | 1 |
| 203844 | 600mm | 1 |



Reducer

| code | width | pack |
|--------|--------------|------|
| 226040 | 300 to 150mm | 1 |
| 226041 | 300 to 225mm | 1 |
| 226042 | 450 to 300mm | 1 |
| 226043 | 600 to 300mm | 1 |

See next page for fixing accessories and fittings.



Support strut legs with suspension frame.

Fixing accessories



Tray cover

| code | width | pack |
|--------|-------|--------|
| 220067 | 50mm | 1 x 2m |
| 215521 | 75mm | 1 x 3m |
| 215522 | 100mm | 1 x 3m |
| 215523 | 150mm | 1 x 3m |
| 215524 | 225mm | 1 x 3m |
| 215525 | 300mm | 1 x 3m |
| 215526 | 450mm | 1 x 3m |
| 215527 | 600mm | 1 x 3m |



Cover fixing clamp

| code | height | pack |
|--------|--------|------|
| 214476 | 25mm | 100 |



Fish plate

| code | width | pack |
|--------|-------|------|
| 214480 | 75mm | 1 |
| 214481 | 100mm | 1 |
| 214482 | 150mm | 1 |
| 214483 | 225mm | 1 |
| 214484 | 300mm | 1 |
| 214485 | 450mm | 1 |
| 214486 | 600mm | 1 |



Inside splice 12/25/50mm

| code | height | pack |
|--------|--------|------|
| 203800 | 50mm | 1 |



Outside splice

| code | height | pack |
|--------|--------|------|
| 203724 | 25mm | 1 |
| 203801 | 50mm | 1 |



GC nuts and bolts

| code | | pack |
|--------|--------------------|------|
| 206826 | Hot dip galvanised | 100 |

For use with all fixing accessories, brackets and frames



Cable tray clips

| code | height | pack |
|------------|--------|------|
| MTCTCLD050 | 50mm | 25 |
| MTCTC075 | 75mm | 25 |
| MTCTC100 | 100mm | 25 |
| MTCTC150 | 150mm | 25 |
| MTCTC225 | 225mm | 25 |



Ceiling bracket (height 175mm)

| code | description | pack |
|----------|-------------|------|
| MT2/7235 | 100mm | 1 |
| MT2/7236 | 150mm | 1 |
| MT2/7237 | 200mm | 1 |
| MT2/7238 | 300mm | 1 |



Wall bracket

| code | description | pack |
|----------|-------------|------|
| MT2/7230 | 100mm | 1 |
| MT2/7231 | 150mm | 1 |
| MT2/7232 | 200mm | 1 |
| MT2/7233 | 300mm | 1 |
| MT2/7234 | 400mm | 1 |



Wall bracket supporting piece

| code | pack |
|----------|------|
| MT2/6240 | 1 |



Suspension frame base (rods sold separately)

| code | description | pack |
|----------|-------------|------|
| MT2/3630 | 100mm | 1 |
| MT2/1073 | 150mm | 1 |
| MT2/1074 | 200mm | 1 |
| MT2/1076 | 300mm | 1 |
| MT2/3629 | 400mm | 1 |
| MT2/1077 | 500mm | 1 |
| MT2/5941 | 600mm | 1 |



Support strut leg

| code | leg height | pack |
|----------|------------|------|
| MT2/5602 | 142mm | 1 |



Stand off bracket

| code | description | pack |
|----------|-------------|------|
| MT2/1046 | 100mm | 1 |
| MT2/1047 | 150mm | 1 |
| MT2/1048 | 200mm | 1 |
| MT2/1049 | 300mm | 1 |
| MT2/3413 | 400mm | 1 |
| MT2/3414 | 500mm | 1 |
| MT2/3415 | 600mm | 1 |



Variable support bracket

| code | pack |
|----------|------|
| MT2/6477 | 10 |



M8 threaded rod

| code | pack |
|----------|---------|
| MT2/3397 | 10 x 1m |

For use with suspension frame



M8 nut

| code | pack |
|---------|------|
| 2/17553 | 10 |

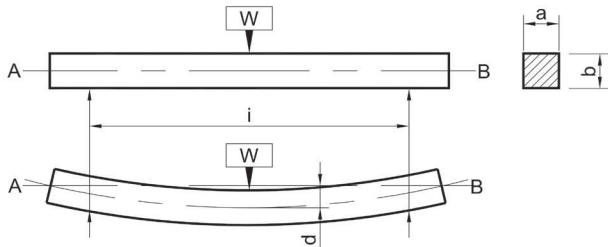
Fittings

METAL CABLE TRAY

Metal Trunking

Deflection Test

The data shown below was gathered in tests by manufacturer and is given in good faith. It does not, however, constitute a warranty nor imply any guarantee.



| Part code | a x b (mm) | Kg/m | Initial Reading (mm) | Final Reading (mm) | Deflection (mm) | Deflection % |
|-----------|------------|-------|----------------------|--------------------|-----------------|--------------|
| MMT22 | 50 x 50 | 2.50 | 219.5 | 220.5 | 1.0 | 0.050 |
| MMT23 | 75 x 50 | 3.75 | 222.5 | 222.5 | 0.0 | 0.000 |
| MMT33 | 75 x 75 | 5.63 | 196.5 | 198.0 | 1.5 | 0.075 |
| MMT42 | 100 x 50 | 5.00 | 220.5 | 222.5 | 2.0 | 0.100 |
| MMT43 | 100 x 75 | 7.50 | 196.5 | 198.0 | 1.5 | 0.075 |
| MMT44 | 100 x 100 | 10.00 | 172 | 172.0 | 0.5 | 0.025 |
| MMT62 | 150 x 50 | 7.50 | 222.5 | 223.5 | 1.0 | 0.050 |
| MMT63 | 150 x 75 | 11.25 | 197.5 | 198.0 | 0.5 | 0.025 |
| MMT64 | 150 x 100 | 15.00 | 174.5 | 172.5 | 2.0 | 0.100 |
| MMT65 | 150 x 150 | 22.50 | 172.5 | 171.5 | 0.5 | 0.025 |

Cable Capacity (maximum no. of cables 600/1000V PVC insulation)

| Part code | Cable Size (CSA mm ²) | | | | | | | | | | |
|-----------|-----------------------------------|-----|-----|-----|-----|-----|-----|-----|----|----|----|
| | 1.5 | 2.5 | 4 | 6 | 10 | 16 | 25 | 35 | 50 | 70 | 95 |
| MMT22 | 120 | 82 | 62 | 48 | 29 | 21 | 14 | 11 | 8 | 6 | 4 |
| MMT23 | 180 | 123 | 93 | 73 | 44 | 32 | 21 | 16 | 12 | 9 | 6 |
| MMT33 | 275 | 188 | 142 | 111 | 67 | 49 | 32 | 25 | 18 | 14 | 10 |
| MMT42 | 243 | 165 | 125 | 98 | 59 | 43 | 28 | 22 | 16 | 12 | 9 |
| MMT43 | 370 | 253 | 192 | 150 | 90 | 66 | 43 | 34 | 24 | 19 | 13 |
| MMT44 | 494 | 337 | 256 | 200 | 120 | 88 | 57 | 45 | 33 | 25 | 18 |
| MMT62 | 359 | 245 | 186 | 145 | 87 | 64 | 41 | 33 | 24 | 18 | 13 |
| MMT63 | 551 | 376 | 285 | 223 | 134 | 99 | 64 | 50 | 36 | 28 | 20 |
| MMT64 | 743 | 507 | 385 | 301 | 181 | 133 | 86 | 68 | 49 | 38 | 27 |
| MMT65 | 1127 | 769 | 584 | 457 | 274 | 202 | 131 | 103 | 75 | 57 | 42 |

Metal Strut

Load Characteristics

Light Duty Slotted Strut 41 x 21cm

| Span or Column Unsupported Length in mm | Uniform Load at 175N/mm ² Stress kg | Deflection in mm at 175Nmm ² | Uniform Load at Maximum Deflection of 1/200th Span kg. | Uniform Load at Maximum Deflection of 1/360th Span kg. | Maximum Load of Column Loaded @ Centroid kg. |
|-----------------------------------------|------------------------------------------------|-----------------------------------------|--------------------------------------------------------|--------------------------------------------------------|----------------------------------------------|
| 250 | 395 | 2 | - | - | - |
| 500 | 201 | 2.6 | 195 | 108 | 2039 |
| 750 | 134 | 5.5 | 91 | 51 | 1162 |
| 1000 | 100 | 9.6 | 15.1 | 29 | 681 |
| 1250 | 80 | 15.1 | 33 | 52 | 443 |
| 1500 | 67 | 22.4 | 22 | 12 | 310 |
| 1750 | 53 | 24.79 | 16 | 9 | - |
| 2000 | 50 | 41.1 | 12 | 7 | - |
| 2250 | 42 | 50.1 | 10 | 6 | - |
| 2500 | 40 | 68.2 | 7 | 4 | - |
| 2750 | 33 | 76.2 | 6 | 4 | - |
| 3000 | 31 | 105 | 5 | 3 | - |

Light Duty Plain Strut 41 x 21cm

| Span or Column Unsupported Length in mm | Uniform Load at 175N/mm ² Stress kg | Deflection in mm at 175Nmm ² | Uniform Load at Maximum Deflection of 1/200th Span kg. | Uniform Load at Maximum Deflection of 1/360th Span kg. | Maximum Load of Column Loaded @ Centroid kg. |
|-----------------------------------------|------------------------------------------------|-----------------------------------------|--------------------------------------------------------|--------------------------------------------------------|----------------------------------------------|
| 250 | 395 | 2 | - | - | - |
| 500 | 201 | 2.6 | 195 | 108 | 2039 |
| 750 | 134 | 5.5 | 91 | 51 | 1162 |
| 1000 | 100 | 9.6 | 15.1 | 29 | 681 |
| 1250 | 80 | 15.1 | 33 | 52 | 443 |
| 1500 | 67 | 22.4 | 22 | 12 | 310 |
| 1750 | 53 | 24.7 | 16 | 10 | - |
| 2000 | 50 | 41.1 | 12 | 7 | - |
| 2250 | 42 | 51.2 | 9 | 8 | - |
| 2500 | 40 | 68.2 | 7 | 4 | - |
| 2750 | 33 | 78.7 | 6 | 3 | - |
| 3000 | 31 | 105 | 5 | 3 | - |

Light Duty Slotted Strut 41 x 41mm

| Span or Column Unsupported Length in mm | Uniform Load at 175N/mm ² Stress kg | Deflection in mm at 175Nmm ² | Uniform Load at Maximum Deflection of 1/200th Span kg. | Uniform Load at Maximum Deflection of 1/360th Span kg. | Maximum Load of Column Loaded @ Centroid kg. |
|-----------------------------------------|------------------------------------------------|-----------------------------------------|--------------------------------------------------------|--------------------------------------------------------|----------------------------------------------|
| 250 | 703 | 2 | - | - | 3250 |
| 500 | 608 | 2.3 | - | 370 | 3179 |
| 750 | 405 | 3 | - | 277 | 3041 |
| 1000 | 304 | 4.8 | - | 175 | 2732 |
| 1250 | 243 | 7.4 | 208 | 116 | 2153 |
| 1500 | 203 | 10.2 | 146 | 81 | 1601 |
| 1750 | 171 | 13.2 | 109 | 59 | 1305 |
| 2000 | 152 | 18.7 | 81 | 45 | 941 |
| 2250 | 138 | 21.6 | 66 | 36 | 763 |
| 2500 | 122 | 28.3 | 51 | 29 | 613 |
| 2750 | 106 | 31.4 | 43 | 24 | 516 |
| 3000 | 101 | 41.2 | 35 | 19 | 430 |

Light Duty Plain Strut 41 x 41mm

| Span or Column Unsupported Length in mm | Uniform Load at 175N/mm ² Stress kg | Deflection in mm at 175Nmm ² | Uniform Load at Maximum Deflection of 1/200th Span kg. | Uniform Load at Maximum Deflection of 1/360th Span kg. | Maximum Load of Column Loaded @ Centroid kg. |
|-----------------------------------------|------------------------------------------------|-----------------------------------------|--------------------------------------------------------|--------------------------------------------------------|----------------------------------------------|
| 250 | 703 | 2 | - | - | 3250 |
| 500 | 608 | 2.3 | - | 370 | 3179 |
| 750 | 405 | 3 | - | 277 | 3041 |
| 1000 | 304 | 4.8 | - | 175 | 2732 |
| 1250 | 243 | 7.4 | 208 | 116 | 2153 |
| 1500 | 203 | 10.2 | 146 | 81 | 1601 |
| 1750 | 171 | 13.2 | 109 | 59 | - |
| 2000 | 152 | 18.7 | 81 | 45 | - |
| 2250 | 138 | 21.6 | 66 | 36 | - |
| 2500 | 122 | 28.3 | 51 | 29 | - |
| 2750 | 106 | 31.4 | 43 | 24 | - |
| 3000 | 101 | 41.2 | 35 | 19 | - |

Heavy Duty Slotted Strut 41 x 21mm

| Span or Column Unsupported Length in mm | Uniform Load at 175N/mm ² Stress kg | Deflection in mm at 175Nmm ² | Uniform Load at Maximum Deflection of 1/200th Span kg. | Uniform Load at Maximum Deflection of 1/360th Span kg. | Maximum Load of Column Loaded @ Centroid kg. | Maximum Load of Column Loaded @ Slot Face kg. |
|-----------------------------------------|------------------------------------------------|-----------------------------------------|--------------------------------------------------------|--------------------------------------------------------|----------------------------------------------|-----------------------------------------------|
| 250 | 508 | 0.5 | - | - | - | - |
| 500 | 254 | 2.01 | - | 174 | - | - |
| 750 | 169 | 4.54 | 139 | 77 | - | - |
| 1000 | 127 | 8.07 | 78 | 43 | - | - |
| 1250 | 101 | 12.61 | 50 | 27 | - | - |
| 1500 | 84 | 18.71 | 34 | - | - | - |
| 1750 | 72 | 24.73 | 25 | - | - | - |
| 2000 | 63 | 32.3 | - | - | - | - |

Heavy Duty Plain Strut 41 x 21mm

| Span or Column Unsupported Length in mm | Uniform Load at 175N/mm ² Stress kg | Deflection in mm at 175Nmm ² | Uniform Load at Maximum Deflection of 1/200th Span kg. | Uniform Load at Maximum Deflection of 1/360th Span kg. | Maximum Load of Column Loaded @ Centroid kg. |
|-----------------------------------------|------------------------------------------------|-----------------------------------------|--------------------------------------------------------|--------------------------------------------------------|----------------------------------------------|
| 250 | 553 | 0.45 | - | - | 3993 |
| 500 | 276 | 1.81 | - | 212 | 3379 |
| 750 | 184 | 4.07 | 169 | 94 | 2198 |
| 1000 | 138 | 7.24 | 95 | 53 | 1353 |
| 1250 | 110 | 11.32 | 61 | 33 | 896 |
| 1500 | 92 | 16.3 | 42 | 23 | 439 |
| 1750 | 79 | 22.19 | 31 | 20 | - |
| 2000 | 73 | 40.2 | 19 | 11 | - |
| 2250 | 68 | 52.2 | 16 | 9 | - |
| 2500 | 62 | 65.7 | 12 | 7 | - |
| 2750 | 56 | 73.7 | 10 | 5 | - |
| 3000 | 52 | 96.4 | 8 | 4 | - |

TECHNICAL INFORMATION

Heavy Duty Slotted Strut 41 x 41 cm

| Span or Column Unsupported Length in mm | Uniform Load at 175N/mm ² Stress kg | Deflection in mm at 175Nmm ² | Uniform Load at Maximum Deflection of 1/200th Span kg. | Uniform Load at Maximum Deflection of 1/360th Span kg. | Maximum Load of Column Loaded @ Centroid kg. | Maximum Load of Column Loaded @ Slot Face kg. |
|-----------------------------------------|------------------------------------------------|-----------------------------------------|--------------------------------------------------------|--------------------------------------------------------|----------------------------------------------|-----------------------------------------------|
| 250 | 1638 | 70.23 | - | - | 5351 | 1660 |
| 500 | 819 | 1.05 | - | - | 5100 | 1635 |
| 750 | 546 | 2.35 | - | 483 | 4412 | 1557 |
| 1000 | 409 | 4.18 | - | 271 | 3284 | 1389 |
| 1250 | 327 | 6.54 | 313 | 174 | 2436 | 1211 |
| 1500 | 273 | 8.41 | 2.17 | 120 | 1899 | 1062 |
| 1750 | 234 | 12.81 | 159 | 88 | 1546 | 941 |
| 2000 | 204 | 16.73 | 122 | 67 | 1297 | 843 |
| 2250 | 182 | 21.18 | 96 | 53 | 1113 | 761 |
| 2500 | 163 | 26.15 | 78 | 43 | 970 | 691 |
| 2750 | 148 | 31.64 | 64 | 35 | -855 | -631 |
| 3000 | 136 | 37.65 | 54 | 30 | -761 | -578 |

Heavy Duty Plain Strut 41 x 41 cm

| Span or Column Unsupported Length in mm | Uniform Load at 175N/mm ² Stress kg | Deflection in mm at 175Nmm ² | Uniform Load at Maximum Deflection of 1/200th Span kg. | Uniform Load at Maximum Deflection of 1/360th Span kg. | Maximum Load of Column Loaded @ Centroid kg. | Maximum Load of Column Loaded @ Slot Face kg. |
|-----------------------------------------|------------------------------------------------|-----------------------------------------|--------------------------------------------------------|--------------------------------------------------------|----------------------------------------------|-----------------------------------------------|
| 250 | 1769 | 0.23 | - | - | 5869 | 1693 |
| 500 | 884 | 0.95 | - | - | 5379 | 1650 |
| 750 | 589 | 2.15 | - | 571 | 4479 | 1554 |
| 1000 | 442 | 3.82 | - | 321 | 3373 | 1395 |
| 1250 | 353 | 5.97 | - | 205 | 2556 | 1232 |
| 1500 | 294 | 8.6 | 257 | 142 | 2020 | 1093 |
| 1750 | 252 | 11.7 | 188 | 104 | 1656 | 976 |
| 2000 | 221 | 15.29 | 144 | 80 | 1395 | 879 |
| 2250 | 196 | 19.35 | 114 | 63 | 1198 | 797 |
| 2500 | 176 | 23.89 | 92 | 51 | 1044 | 725 |
| 2750 | 160 | 28.91 | 76 | 42 | -919 | -663 |
| 3000 | 147 | 34.4 | 64 | 35 | -816 | -607 |

Heavy Duty Slotted Back to Back Strut

| Span or Column Unsupported Length in mm | Uniform Load at 175N/mm ² Stress kg | Deflection in mm at 175Nmm ² | Uniform Load at Maximum Deflection of 1/200th Span kg. | Uniform Load at Maximum Deflection of 1/360th Span kg. | Maximum Load of Column Loaded @ Centroid kg. | Maximum Load of Column Loaded @ Slot Face kg. |
|-----------------------------------------|------------------------------------------------|-----------------------------------------|--------------------------------------------------------|--------------------------------------------------------|----------------------------------------------|-----------------------------------------------|
| 250 | - | - | - | - | 11952 | 2740 |
| 500 | - | - | - | - | 11682 | 2731 |
| 750 | 1636 | 1.21 | - | - | 11186 | 2700 |
| 1000 | 1225 | 2.15 | - | - | 10451 | 2658 |
| 1250 | 980 | 3.36 | - | - | 9305 | 2583 |
| 1500 | 818 | 4.84 | - | 703 | 7790 | 2481 |
| 1750 | 7.01 | 6.59 | - | 517 | 6293 | 2287 |
| 2000 | 610 | 8.62 | - | 395 | 5068 | 2103 |
| 2250 | 544 | 10.89 | - | 310 | 4127 | 1920 |
| 2500 | 488 | 13.45 | 455 | 251 | 3410 | 1746 |
| 2750 | 448 | 16.27 | 374 | 208 | 2858 | 15.84 |
| 3000 | 410 | 19.37 | 316 | 175 | -2427 | -1431 |

Heavy Duty Back to Back Plain Strut

| Span or Column Unsupported Length in mm | Uniform Load at 175N/mm ² Stress kg | Deflection in mm at 175Nmm ² | Uniform Load at Maximum Deflection of 1/200th Span kg. | Uniform Load at Maximum Deflection of 1/360th Span kg. | Maximum Load of Column Loaded @ Centroid kg. | Maximum Load of Column Loaded @ Slot Face kg. |
|-----------------------------------------|------------------------------------------------|-----------------------------------------|--------------------------------------------------------|--------------------------------------------------------|----------------------------------------------|-----------------------------------------------|
| 250 | - | - | - | - | 11952 | 2880 |
| 500 | - | - | - | - | 11682 | 2864 |
| 750 | 1670 | 1.21 | - | - | 11186 | 2833 |
| 1000 | 1253 | 2.15 | - | - | 10451 | 2783 |
| 1250 | 1002 | 3.36 | - | - | 9305 | 2695 |
| 1500 | 835 | 4.84 | - | 718 | 7790 | 2551 |
| 1750 | 716 | 6.59 | - | 527 | 6293 | 2367 |
| 2000 | 626 | 8.62 | - | 404 | 5068 | 2170 |
| 2250 | 556 | 10.89 | - | 319 | 4127 | 1977 |
| 2500 | 501 | 13.45 | 465 | 258 | 3410 | 1796 |
| 2750 | 455 | 16.27 | 384 | 213 | 2858 | 1630 |
| 3000 | 417 | 19.37 | 323 | 179 | -2427 | -1480 |

Wire Basket

Useful area

| Base Width | Standard Basket 35mm Height* | | Fast Coupling 65mm Height | |
|------------|------------------------------|-----------------|---------------------------|-----------------|
| | in ² | cm ² | in ² | cm ² |
| 60 | - | - | 3.57 | 23 |
| 100 | 4.18 | 27 | 7.29 | 47 |
| 150 | 6.51 | 42 | 11.63 | 75 |
| 200 | 8.99 | 58 | 15.81 | 102 |
| 300 | 13.80 | 89 | 24.34 | 157 |
| 400 | - | - | 32.86 | 212 |
| 500 | - | - | 41.39 | 267 |
| 600 | - | - | 49.91 | 322 |

*Please note our 35mm wire basket does not have integral couplers

Metal Cable Ladder

Safe working load

| Ladder height | Support Spacing (m) | | | | | |
|---------------|---------------------|-----|-----|-----|-----|-----|
| | 2 | 2.5 | 3 | 4 | 5 | 6 |
| 75mm | 260 | 167 | 116 | | | |
| 100mm | 468 | 300 | 208 | 117 | 75 | |
| 125mm | | 524 | 364 | 205 | 131 | 91 |
| 150mm | | | 472 | 265 | 170 | 118 |

Metal Cable Tray

Useful area

| Base Width | Light duty cable tray | | | Medium duty cable tray | | | Heavy duty cable tray | | |
|------------|-----------------------|-------|--------------|------------------------|-------|--------------|-----------------------|-------|--------------|
| | Height | Gauge | Filling Load | Height | Gauge | Filling Load | Height | Gauge | Filling Load |
| 50mm | 12mm | 0.8mm | 1.0kg/m | 25mm | 0.7mm | 2.5kg/m | - | - | - |
| 75mm | 12mm | 0.8mm | 1.8kg/m | 25mm | 0.7mm | 4.0kg/m | 50mm | 0.8mm | 8.3kg/m |
| 100mm | 12mm | 0.8mm | 2.3kg/m | 25mm | 0.7mm | 5.3kg/m | 50mm | 0.8mm | 113kg/m |
| 150mm | 12mm | 0.8mm | 3.5kg/m | 25mm | 0.8mm | 8.3kg/m | 50mm | 0.8mm | 17.5kg/m |
| 225mm | 12mm | 0.8mm | 5.5kg/m | 25mm | 0.8mm | 12.5kg/m | 50mm | 1.2mm | 26.3kg/m |
| 300mm | 12mm | 1.2mm | 11.8kg/m | 25mm | 1.0mm | 16.8kg/m | 50mm | 1.2mm | 35.3kg/m |
| 450mm | - | - | - | 25mm | 1.2mm | 25.5kg/m | 50mm | 1.5mm | 53.3kg/m |
| 600mm | - | - | - | 25mm | 1.2mm | 34.0kg/m | 50mm | 1.5mm | 71.3kg/m |

Marshall-Tufflex Ltd

55-65 Castleham Road
St Leonards on Sea
East Sussex
TN38 9NU
United Kingdom

T +44 (0)1424 856600
E sales@marshall-tufflex.com
www.marshall-tufflex.com

Technical Hotline:
+44 (0)1424 856688



Collect your order from our branches:

Watford (WD18 0EZ)
Manchester (M26 1GG)
Hastings (TN38 9NU)

Republic of Ireland distributor

Core Distribution Ireland
17b Goldenbridge Industrial Estate
Tyrconnell Road, Inchicore
Dublin 8, D08 WD50

T +353 (0)1453 7033

E sales@coreelectrical.ie

Northern Ireland distributor

Core Distribution Northern Ireland
Unit 4 Duncrue Industrial Park
Duncrue Road
Belfast, BT3 9BP

T +44 (0)28 900 200 66

E info@coreelectrical.com

In pursuance of our policy of continued product improvement Marshall-Tufflex reserve the right to change the design or specification of its products without notification.

**UK OWNED
UK MANUFACTURER**

